

Product type

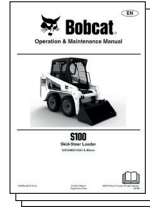

 Model
S100

 Version
06-2021
Rev. 1.0

SAFETY FIRST!

IMPORTANT

- ▶ This document **DOES NOT** replace the Operation & Maintenance Manual.
- ▶ You must read **ALL** safety and other instructions from the Operation & Maintenance Manual before operating, transporting or servicing this machine.



MAIN MACHINE SPECIFICATIONS

	UNIT	S100
Operating weight (with bucket, operator and full fuel tank)	kg	1860
Shipping weight	kg	1693
Engine power (ISO 14396)	kW @ rpm	18.2 @ 2300
Torque	Nm @ rpm	86.4 @ 1600
Tipping load (ISO 14397-1)	kg	915
Rated operating capacity (ISO 14397-1)	kg	457
Pump capacity	l/min	36.0
Travel speed	km/h	8.2/13.4
Fuel tank	l	45
Length with standard bucket	mm	2800
Width over standard bucket	mm	1270
Height with operator cab	mm	1878
Height to bucket hinge pin	mm	2633
Wheelbase	mm	818

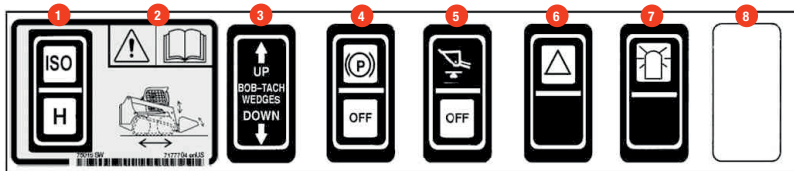
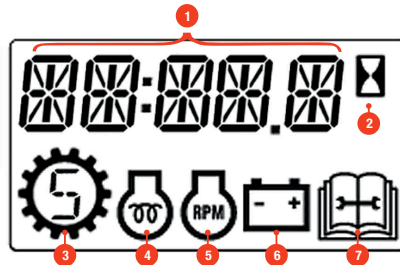


CONTROL ELEMENTS

1 if equipped

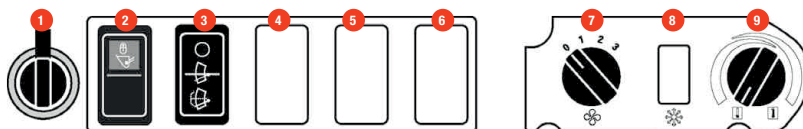
STANDARD DISPLAY

- 1 Data display
- 2 Hourmeter
- 3 Speed management
- 4 Engine preheat
- 5 Engine RPM
- 6 Battery / charging voltage
- 7 Service



INSTRUMENT PANEL FRONT

- 1 Selectable joystick controls (SJC)¹
- 2 Not used
- 3 Power Bob-Tach¹
- 4 Parking brake (standard on all loaders)
- 5 Hydraulic bucket positioning¹
- 6 Hazard lights¹
- 7 Rotating beacon¹ or strobe light¹
- 8 Not used

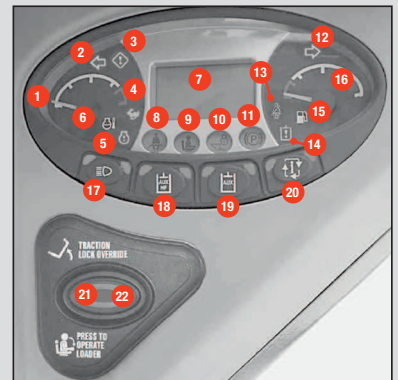


INSTRUMENT PANEL SIDE

- 1 Power port
- 2 Travel lock
- 3 Front wiper¹
- 4 Rear wiper¹
- 5 Not used
- 6 Not used
- 7 Fan motor¹
- 8 Not used
- 9 Temperature control¹

INSTRUMENT PANEL LEFT

- 1 Engine temperature gauge
- 2 Left turn signal¹
- 3 General warning
- 4 Two-speed¹
- 5 Engine malfunction
- 6 Engine coolant temperature
- 7 Display screen
- 8 Seat belt
- 9 Seat bar
- 10 Lift and tilt valve
- 11 Parking brake
- 12 Right turn signal¹
- 13 Shoulder belt
- 14 Hydraulic system malfunction
- 15 Fuel
- 16 Fuel gauge
- 17 Lights
- 18 High-flow



- 19 Auxiliary hydraulics
- 20 Information
- 21 Traction lock override
- 22 Press to operate loader



INSTRUMENT PANEL RIGHT STANDARD

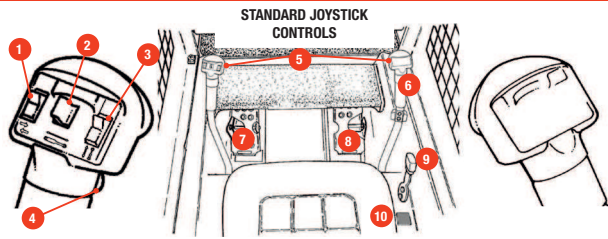
The Standard Key Panel is used to turn the loader electrical system on and off, and to start and stop the engine.



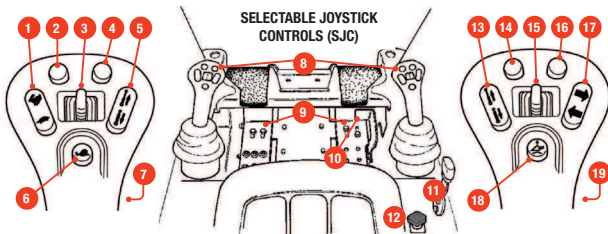
INSTRUMENT PANEL RIGHT KEYLESS START

- 1 Keypad (keys 1 through 0)
- 2 Lock key
- 3 Unlock key
- 4 START button
- 5 STOP button
- 6 RUN button

JOYSTICK CONTROLS



- | | | |
|---|-----------------------------------|-------------------------------|
| 1 Turn signals ¹
also: attachment
function control | 3 Attachment function
control | 7 Lift arm pedal |
| 2 Attachment
function control | 4 Front horn | 8 Tilt pedal |
| | 5 Steering levers | 9 Engine speed
control |
| | 6 Auxiliary hydraulics
control | 10 Lift arm bypass
control |



- | | | |
|--|-----------------------------------|---|
| 1 Two-speed control ¹
also: speed management | 8 Joysticks | 14 Not used |
| 2 Steering drift compensation
also: drive response | 9 Footrests | 15 Front auxiliary
hydraulics |
| 3 Attachment function control | 10 Engine speed
control (foot) | 16 Not used |
| 4 Steering drift compensation
also: drive response | 11 Engine speed
control (hand) | 17 Turn signals
(option) |
| 5 Attachment function control | 12 Lift arm bypass
control | 18 Float control |
| 6 Speed management | 13 Attachment
function control | 19 Continuous flow
control for auxiliary
hydraulics |
| 7 Front horn | | |

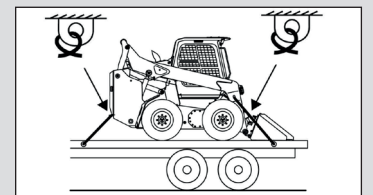
KEY SAFETY INSTRUCTIONS

GENERAL SAFETY INSTRUCTIONS

- ▶ **Check Operation & Maintenance Manual for full safety instructions**
Make sure no bystanders are in the work area. Never carry riders.
- ▶ **Ensure daily inspection and maintenance**
See below for more information.
- ▶ **Do not exceed rated lift capacity**
Always check lift capacity chart in Operation & Maintenance Manual. Excessive load can cause tipping or loss of control. Avoid tipping.
- ▶ **Seat belt and seat bar restraint**
Always fasten seat belt snugly, use the seat bar and keep feet on foot pedals or footrests.
- ▶ **Never use attachments or buckets which are not approved by Bobcat Company**
Before any use, ensure that the attachment is properly locked.

TRANSPORT/TIE-DOWN

- ▶ Use transport and towing vehicle of adequate length and capacity.
- ▶ Secure parking brakes and block wheels of transport vehicle.
- ▶ Use and align metal loading ramps with slip resistant surface.
- ▶ Drive backward onto the transport vehicle.
- ▶ Fasten holddown chains to tie down points.
- ▶ Tighten chains with chain binders.



SEAT BAR RESTRAINT SYSTEM

- ▶ When the seat bar **1** is raised, hydraulic and traction system functions are locked and will not operate.



LIFT ARM SUPPORT

- ▶ Never go under or reach under lift arms or lift cylinder without an approved lift arm support installed.



DAILY INSPECTION AND MAINTENANCE

¹ if equipped

AROUND MACHINE

- ▶ Check canopy/cab condition and mounting hardware
- ▶ Check safety signs (decals)
- ▶ Check attachment, quick coupler, tires or tracks
- ▶ Grease all pivot points

IN CANOPY/CAB

- ▶ Check seat belt, retractors, safety bar
- ▶ Check motion alarm, horn and rear-view camera¹
- ▶ Check indicators and lights
- ▶ Check cab filters and HVAC filters

MAINTENANCE SCHEDULE

FILTERS

- ▶ **Fuel filter (In-line)**
- ▶ **Fuel filter (Spin-on)**
- ▶ **Engine air filter**
Lifting the lever to rotate cover

Remove outer and inner filters

FLUID LEVELS

- ▶ **Engine oil**
 - ▶ **Engine coolant**
 - ▶ **Hydraulic fluid**
Machine must be in service position²
- ▶ For more details, please refer to the Operation & Maintenance Manual.