

Product type


 Model  
S70

 Version  
06-2021  
Rev. 1.0

## SAFETY FIRST!

### IMPORTANT

- ▶ This document **DOES NOT** replace the Operation & Maintenance Manual.
- ▶ You must read **ALL** safety and other instructions from the Operation & Maintenance Manual before operating, transporting or servicing this machine.



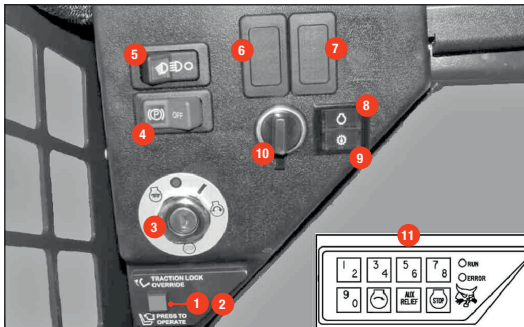
## MAIN MACHINE SPECIFICATIONS

	UNIT	S70
Operating weight (with bucket, operator and full fuel tank)	kg	1268
Shipping weight	kg	1109
Engine power (ISO 14396)	kW @ rpm	17.5 @ 2400
Torque	Nm @ rpm	62.8 @ 1425
Tipping load (ISO 14397-1)	kg	686
Rated operating capacity (ISO 14397-1)	kg	343
Pump capacity	l/min	37.0
Travel speed	km/h	9.8
Fuel tank	l	24.6
Length with standard bucket	mm	2472
Width over standard bucket	mm	914
Height with operator cab	mm	1814
Height to bucket hinge pin	mm	2399
Wheelbase	mm	722



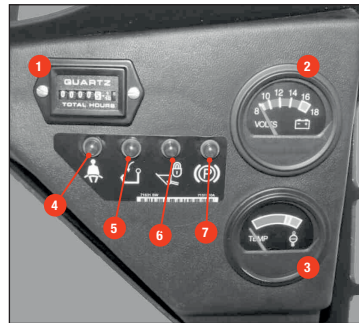
## CONTROL ELEMENTS

1 if equipped



### INSTRUMENT PANEL LEFT

- |                                  |                              |
|----------------------------------|------------------------------|
| 1 Traction lock override button  | 7 Not used                   |
| 2 Press to operate loader button | 8 Engine warning light       |
| 3 Key switch                     | 9 Transmission warning light |
| 4 Parking brake                  | 10 Power plug                |
| 5 Light switch                   | 11 Keyless panel             |
| 6 Not used                       |                              |



### INSTRUMENT PANEL RIGHT

- Hourmeter
- Voltmeter
- Engine temperature gauge
- Seat belt indicator light
- Seat bar light
- Lift and tilt valve light
- Parking brake light

### ENGINE START / STOP



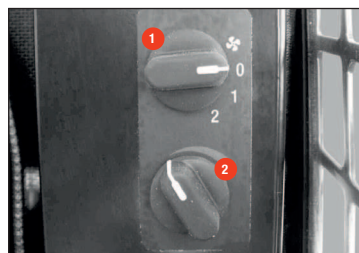
### KEYLESS START PANEL

- Keypad (keys 1 through 0)
- Run light
- Error light
- Start button
- Aux. Relief / preheat button
- Stop button



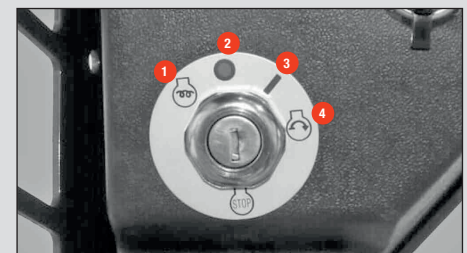
### ACCESSORY KEY PANEL

- |   |   |
|---|---|
| 1 Rotating beacon <sup>1</sup> or strobe light <sup>1</sup> | 4 Hydraulic bucket positioning <sup>1</sup> |
| 2 Hazard lights <sup>1</sup>                                | 5 Travel lock                               |
| 3 Front windshield wiper <sup>1</sup>                       |   |



### CAB HEATER PANEL

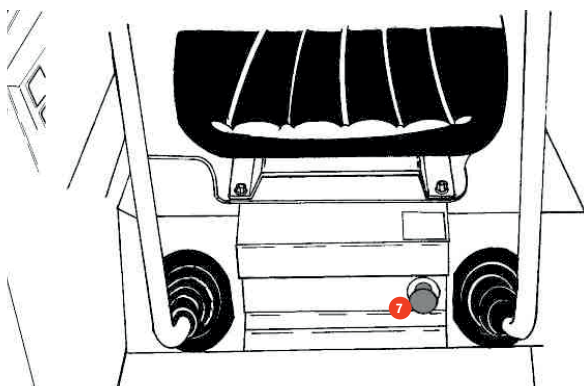
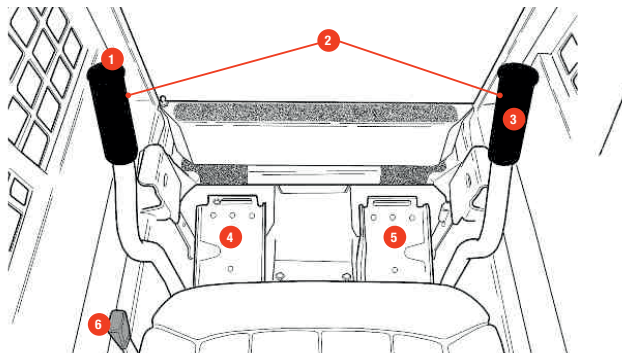
- Fan motor<sup>1</sup>
- Temperature control<sup>1</sup>



### STANDARD KEY PANEL

- |                  |         |
|------------------|---------|
| 1 Engine preheat | 3 Run   |
| 2 Stop           | 4 Start |

### JOYSTICK CONTROLS



#### STANDARD CONTROLS

- |                                |                           |
|--------------------------------|---------------------------|
| 1 Front horn <sup>1</sup>      | 5 Tilt pedal              |
| 2 Steering levers              | 6 Engine speed control    |
| 3 Auxiliary hydraulics control | 7 Lift arm bypass control |
| 4 Lift arm pedal               |                           |

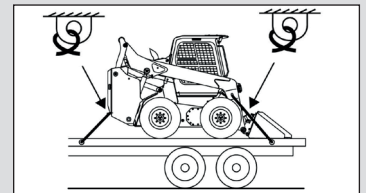
### KEY SAFETY INSTRUCTIONS

#### GENERAL SAFETY INSTRUCTIONS

- ▶ **Check Operation & Maintenance Manual for full safety instructions**  
Make sure no bystanders are in the work area. Never carry riders.
- ▶ **Ensure daily inspection and maintenance**  
See below for more information.
- ▶ **Do not exceed rated lift capacity**  
Always check lift capacity chart in Operation & Maintenance Manual. Excessive load can cause tipping or loss of control. Avoid tipping.
- ▶ **Seat belt and seat bar restraint**  
Always fasten seat belt snugly, use the seat bar and keep feet on foot pedals or footrests.
- ▶ **Never use attachments or buckets which are not approved by Bobcat Company**  
Before any use, ensure that the attachment is properly locked.

#### TRANSPORT/TIE-DOWN

- ▶ Use transport and towing vehicle of adequate length and capacity.
- ▶ Secure parking brakes and block wheels of transport vehicle.
- ▶ Use and align metal loading ramps with slip resistant surface.
- ▶ Drive backward onto the transport vehicle.
- ▶ Fasten holddown chains to tie down points.
- ▶ Tighten chains with chain binders.



#### SEAT BAR RESTRAINT SYSTEM

- ▶ When the seat bar **1** is raised, hydraulic and traction system functions are locked and will not operate.



#### LIFT ARM SUPPORT

- ▶ Never go under or reach under lift arms or lift cylinder without an approved lift arm support installed.



### DAILY INSPECTION AND MAINTENANCE

<sup>1</sup> if equipped

#### AROUND MACHINE

- ▶ Check canopy/cab condition and mounting hardware
- ▶ Check safety signs (decals)
- ▶ Check attachment, quick coupler, tires or tracks
- ▶ Grease all pivot points

#### IN CANOPY/CAB

- ▶ Check seat belt, retractors, safety bar
- ▶ Check motion alarm, horn and rear-view camera<sup>1</sup>
- ▶ Check indicators and lights
- ▶ Check cab filters and HVAC filters

#### FILTERS

- ▶ **Fuel filter**
- ▶ **Engine air filter**  
Lift latches to remove cover  
   
Remove outer and inner filters

#### FLUID LEVELS

- ▶ **Engine oil**
- ▶ **Engine coolant**
- ▶ **Hydraulic fluid**  
Machine must be in service position<sup>2</sup>

▶ For more details, please refer to the Operation & Maintenance Manual.



#### MAINTENANCE SCHEDULE