



Bobcat®

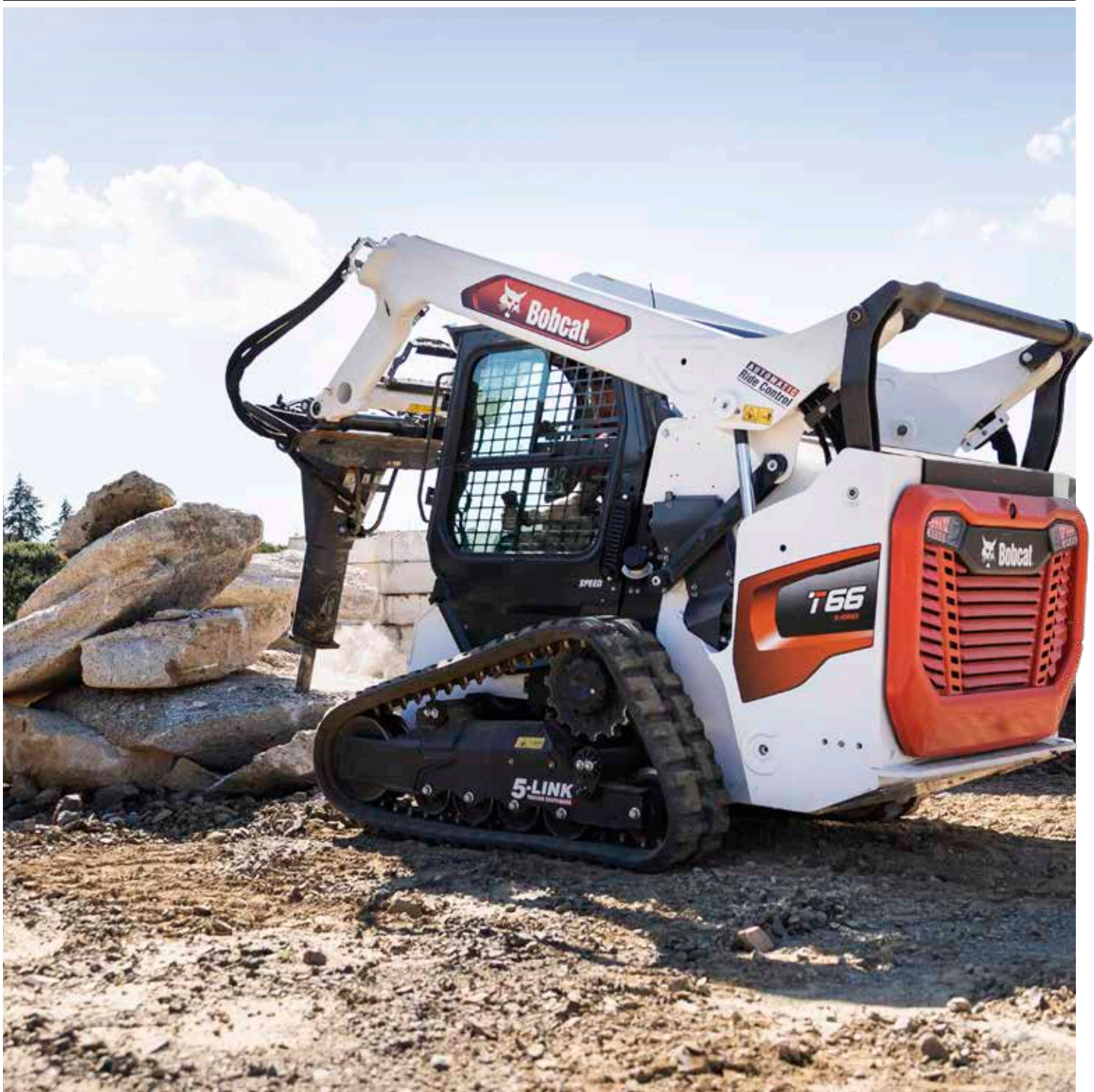
One Tough Animal.

COMPACT TRACK LOADERS

T66, T76

R-Series

🌐 Europe



INTRODUCTION

ONE TOUGH ANIMAL

► OUR MISSION

We empower operators to accomplish more, while working in the toughest conditions and tightest situations. When our customers have the will, we provide the way.



► BOBCAT'S HISTORY

In 1958, Melroe Manufacturing Company introduced a compact front-end loader that evolved quickly into the M400, the world's first true skid steer loader. The company soon adopted what became the world-famous 'Bobcat' brand – and its success paved the way for the global compact equipment industry we know today.

► CONTINUOUS INNOVATION

New technologies and machines are rigorously tested in our innovation facilities to take on the toughest jobs.



► BOBCAT TODAY

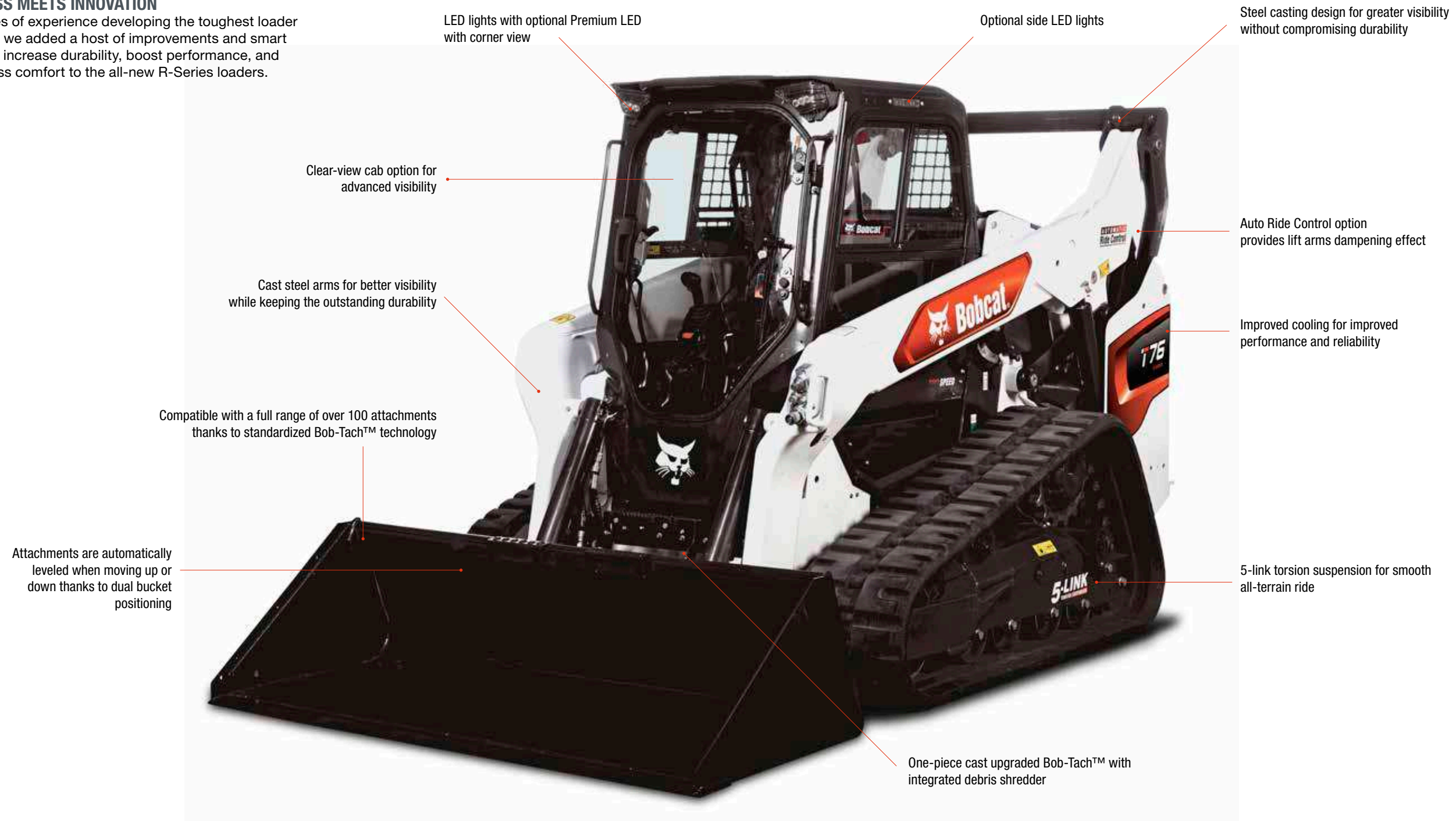
Since introducing our first compact track loader in 1999, the new category quickly gained popularity thanks to Bobcat's decades of experience building compact loaders to the highest standards.



BUILT FOR ALL CONDITIONS

► TOUGHNESS MEETS INNOVATION

Using decades of experience developing the toughest loader on the planet, we added a host of improvements and smart technology to increase durability, boost performance, and bring first-class comfort to the all-new R-Series loaders.



► STABLE AND STRONG
Outstanding lift capacity with high pushing and breakout forces, complemented by excellent machine stability.



► BUILT TOUGH
One-piece cast steel loader arms and upgraded Bob-Tach™ with integrated debris shredder are designed for the most challenging conditions.



► FIRST CLASS COMFORT
5-link torsion suspension provides a smooth ride, while connectivity options and soundproof cab make staying in touch easy.



► IMPROVED VISIBILITY
New cab construction is optimized for maximum visibility, further expandable by clear-view cab or rear-view camera options.

POWER WHERE YOU NEED IT

► GENTLE WHEN REQUIRED

The tracks' low ground pressure allows travel over sensitive areas. Increased traction ensures grip in mud or on unprepared sites and improves productivity with ground-engaging attachments.



► TRULY ALL-TERRAIN

The R-Series' weight distribution and optimized footprint allow travel and work in places where other machines cannot go – uneven terrain, trenches or inclines up to 35%.



OUTSTANDING PERFORMANCE

► IMPROVED COOLING

The R-Series' smart cooling system has been completely redesigned for optimal operation and uptime. The fan is almost 50% bigger and comes with a reversible option, increasing productivity in dirty conditions.



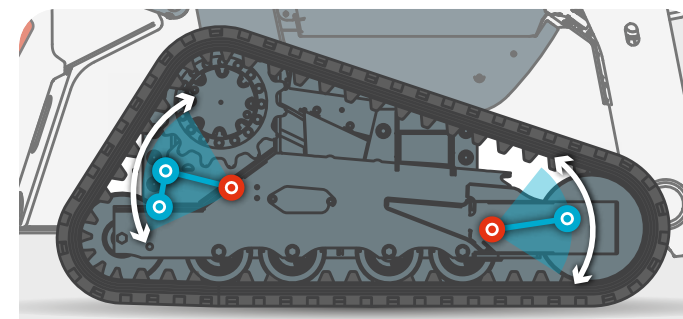
► INCREASED LIFTING CAPABILITIES

With more surface area in contact with the ground and a perfect balance between weight and horsepower, the R-Series features outstanding stability and enough lift capacity for any job site.



► 5-LINK TORSION SUSPENSION

The R-Series undercarriage provides more stability when lifting or grading as well as a smoother ride, thanks to its 5-link torsion suspension. This simple and durable design also reduces vibration to further improve component life.



STEP INSIDE



► CLEAR-VIEW CAB
The optional clear side enclosure adds thick poly-carbonate side windows with abrasion-resistant coating – maximizing your visibility and ensuring the best possible view of tracks and corners.



► INTUITIVE TOUCH CONTROLS



Take control of all settings with the optional glove-sensitive 7-inch display. New display is waterproof and scratch resistant.

► ADVANCED CONNECTIVITY



Connect your phone – thanks to the integrated Bluetooth – and enhance your comfort during calls or play your favorite music.

► PERFECT SEAT



Comfortable suspension seat as standard, and optional cloth heated air-ride seat, for maximum comfort all day – and all year – long.



BUILT TO LAST

► OUTSTANDING UPTIME

The R-series has been developed with a special focus on durability and uptime -- featuring many small improvements that, together, help minimize maintenance and protect your machine: self-diagnostics, machine shutdown protection, battery run-down protection, cold weather protection, improved lubrication and access to greasing points, improved protection of hoses, and more. Additionally, R-Series track loaders feature long-lasting tracks and a reliable undercarriage, which further increase uptime and give you added peace of mind.

► EXTENDED SERVICE INTERVALS

R-Series loaders feature a new fuel filter with more than double the media surface area, protecting the system even better and greatly extending the life of the filter. The improved engine design also significantly lengthens the air filter's life. This and other features allow you to improve efficiency and reduce operating costs, thanks to extended service intervals. Bobcat recommends first service after 500 hours of operation.



► MACHINE IQ

BOBCAT® Machine IQ Wireless Communications enhances the support for your Bobcat machine.

- Durable built-in monitoring electronics
- Data is available to our machine monitoring specialist
- Maintenance is optimized for your business
- Data-driven services maximize uptime

► STANDARD WARRANTY

Bobcat develops every machine to the highest standards of quality and durability. That's why our standard warranty provides 24 months or 2000 operating hours (whichever occurs first) of coverage.

THERE'S NO TIME FOR DOWNTIME. STAND UP TO THE HARSHTEST CONDITIONS. DAY AFTER DAY.



► PROTECTION PLUS EXTENDED WARRANTY

Enjoy total peace of mind with Protection Plus® extended warranty. Providing the same level of protection as the standard warranty, Protection Plus also reflects different customer needs and expectations by offering a choice of durations and annual operating hours. According to your needs, you can benefit from the coverage for up to 5 years or 6000 engine hours. And Protection Plus is transferrable – so it will likely increase your machine's resale value.



► BOBCARE

A long-running machine starts with proper planned maintenance, which helps protect against repair costs and unplanned failures when you're counting on your machine to work.

- Avoid risk by preventing major repairs and complete failures.
- Accomplish more by reducing downtime and increasing your productivity and profitability.



T66

► COMPACT YET POWERFUL

Equipped with the same dependable engine as its bigger brother, the T66 packs a surprising punch in its compact footprint and a lift capacity of 1086 kg.



► MADE TO GO WHERE THE WORK IS



CHOOSE YOUR ANIMAL

T76

► MUSCLES FOR EVERY JOB

The superior hydraulic performance of the T76 guarantees productivity even with the heaviest and most power-hungry attachments. Combined with a lift capacity of 1391 kg, you can tackle anything the job site demands.



► CONQUER EVERY CHALLENGE



STANDARD EQUIPMENT & OPTIONS

	T66	T76
CAB		
3-point seat belt	✓	✓
5" Deluxe instrumentation (radio ready)	✓	✓
7" touch display	•	•
Adjustable suspension seat	✓	✓
Heated cloth air ride seat with 3 point seat belt	•	•
Auto HVAC	•	•
Clear-view cab*	•	•
Deluxe pressurized cab* with HVAC	✓	✓
Fire extinguisher kit	•	•
FOPS kit*	•	•
Key start	✓	✓
Keyless kit	•	•
Lexan rear window kit	•	•
Radio	•	•
Seat bar	✓	✓
Selectable Joystick Controls (SJC)	✓	✓
Special applications front door kit	•	•
LIGHTS & BEACON		
4-way flasher kit	•	•
Beacon	•	•
Headlight guard kit	•	•
LED side lighting kit	•	•
LED working lights front and rear	✓	✓
Premium LED lights (with corner view)	•	•
Strobe	•	•
Tail light guard kit	•	•
TRACKS		
400 mm multi bar lug track	•	–
400 mm wide rubber tracks	✓	–
450 mm multi bar lug track	–	•
450 mm wide rubber rracks	–	✓

• = option ✓ = standard – = not available or not compatible

	T66	T76
PERFORMANCE		
14-pin attachment control kit	•	•
200 lbs (74.4 kg) counterweight kit	•	•
300 lbs (111.9 kg) counterweight kit	–	•
Auto Ride Control	•	•
Auxiliary hydraulics: variable flow/maximum flow	✓	✓
Bob-Tach™ attachment system	✓	✓
Bobcat Interlock Control System (BICS)	✓	✓
Dual Direction Bucket Positioning (including ON/OFF switch)	✓	✓
Engine block heater kit	•	•
Engine/hydraulics system shutdown	✓	✓
High flow hydraulics	✓	✓
Lift arm support	✓	✓
Power Bob-Tach™	•	•
Rear auxiliary hydraulic kit	•	•
Reversible fan	•	•
Spark arrestor muffler	✓	✓
Two speed travel	✓	✓
MISCELLANEOUS		
Backup alarm	✓	✓
Four-point lift kit	•	•
Horn	✓	✓
Machine IQ (telematics)	✓	✓
Operating manual	✓	✓
Parking brake	✓	✓
Reversing camera	•	•
Road kit	•	•
Single-point lift kit	•	•
Torsion Suspension – 5 Link System	•	•
Warranty: 24 months or 2000 hours (whichever occurs first)	✓	✓

*Roll Over Protective Structure (ROPS) – meets requirements of SAE-J1040 and ISO 3471; Falling Object Protective Structure (FOPS) – meets requirements of SAE-J1043 and ISO 3449, Level I

PERSONALIZE YOUR MACHINE

Sometimes, we all want to add a specific functionality or a personal touch to the machine. Choose from a list of comprehensive options and customize your track loader to your heart’s content!



7" touch display



Auto HVAC



Auto Ride Control



LED Side lighting kit



Power Bob-Tach™



Premium LED lights (with corner view)



Clear view cab



Headlight guard kit



Lexan rear window kit



Reversible fan



Reversing camera



Tail light guard kit



Torsion Suspension – 5 Link System

MULTI-TOOL CARRIER

BOBCAT ATTACHMENTS

Get more versatility and efficiency with Bobcat attachments.

- The largest choice of attachments in the industry.
- Match performance to your Bobcat machine.
- Work harder with stronger components and construction.
- Rest easy with the 12-month warranty on every genuine Bobcat attachment.

Actual attachment compatibility may vary based on different machine configurations. Contact your dealer for actual attachment compatibility.



Angle brooms



Box blades



Laser graders



Brush saws



Wheel saw



Concrete mixers



Drop hammers



Grapples



Landplanes



Forestry cutter



Landscape rakes



Tillers



Pallet forks



Root grapples



Planer



Breakers



Snow blades



Tree transplanters



Stump grinders



Scrapers

MULTI-TOOL CARRIER

ATTACHMENTS		
	T66	T76
Angle brooms	•	•
Augers	•	•
Bale forks	•	•
Box blades		•
Breakers	•	•
Brushcat™ rotary cutters	•	•
Brush saws	•	•
Combination buckets	•	•
Concrete mixers	•	•
Construction / industrial buckets	•	•
Diggers	•	•
Dozer blades	•	•
Drop hammers		•
Dumping hoppers	•	•
Fertilizer and grain buckets	•	•
Flail cutters	•	•
General purpose (GP) bucket	•	•
Graders	•	•
Grapples, industrial	•	•
Landplanes	•	•
Landscape rakes	•	•
Laser equipment	•	•
Low profile buckets	•	•
Mixing buckets		•
Mowers	•	•
Pallet forks	•	•
Remote control	•	•
Root grapples	•	•
Scarifiers	•	•
Scrapers	•	•
Skeleton buckets	•	•
Snow & light material buckets	•	•
Snow blades, pushers, V-bades	•	•
Sod layers	•	•
Soil conditioners	•	•
Spreaders	•	•
Steel tracks		•
Stump grinders		•
Sweepers	•	•
Tillers	•	•
Tree transplanters		•
Trench compactors		•
Utility forks	•	•
Vibratory rollers	•	•
Whisker brooms	•	•
Wood chippers	•	•

SPECIFICATIONS

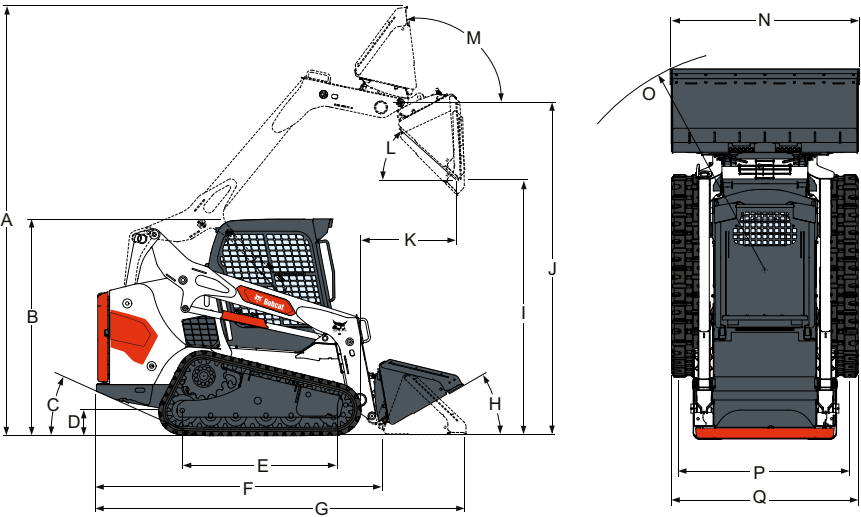
SPECIFICATIONS		
	T66	T76
MACHINE RATING		
Tipping load (ISO 14397-1)	3175 kg	4050 kg
Rated operating capacity (ISO 14397-1)	1115 kg	1426 kg
Pump capacity std flow (at pump RPM)	66.5 L/min	88.1 L/min
Pump capacity high flow (at pump RPM)	101.8 L/min	114.7 L/min
System relief at quick couplers	23.8-24.5 MPa	23.8-24.5 MPa
Travel speed (low)	10.4 km/h	14.8 km/h
Travel speed (high)	16.4 km/h	17.2 km/h
Lift arm path	vertical	
DIMENSIONS		
Length with standard bucket	3427 mm	3737 mm
Width with standard bucket	1880 mm	2032 mm
Height with operator cab	2045 mm	2079 mm
Height to bucket hinge pin	3048 mm	3259 mm
Ground contact length	1378 mm	1505 mm
ENGINE		
Make / Model	Bobcat 2.4L, 97/68 EC Stage V	
Fuel	Diesel	
Cooling	Liquid	
Power at 2600 RPM (ISO 14396)	54.5 kW	
Torque at 1800 RPM (ISO 14396)	283.9 Nm	
Number of cylinders	4	
Displacement	2400 cm³	
Fuel tank capacity	107.1 L	120 L
WEIGHTS		
Operating weight*	4296 kg	5051 kg
Shipping weight	3712 kg	4394 kg
ENVIRONMENTAL		
Operator LpA(98/37 & 474-1)	80 dB(A)	
Noise level LWA(EU Directive 2000/14/EC)	103 dB(A)	
Whole body vibration (ISO 2631–1) High speed	0.8 ms ⁻²	
Hand-arm vibration (ISO 5349–1) High speed	2.8 ms ⁻²	
FORCES		
Lift breakout force	2269 daN	3544 daN
Tilt breakout force	2179 daN	2871 daN
Push Force	3573 daN	3544 daN
CYCLE TIMES		
Raise lift arms	4 s	3.9 s
Lower lift arms	2.8 s	2.6 s
Bucket rollback	1.7 s	
Bucket dump	2.5 s	2.3 s

*Base machine with bucket, operator and full fuel tank

Certain specification(s) are based on engineering calculations and are not actual measurements. Specification(s) are provided for comparison purposes only and are subject to change without notice. Specification(s) for your individual Bobcat equipment will vary based on normal variations in design, manufacturing, operating conditions, and other factors. Pictures of Bobcat units may show other than standard equipment.

SPECIFICATIONS

DIMENSIONS



	T66	T76
A Operating height	3910	4252
B Height with operator cab	2045	2079
C Angle of departure	25°	27°
D Ground clearance	214	235
E Ground contact length	1378	1505
F Length without attachment	2718	2894
G Length with standard bucket	3427	3737
H Rollback at ground position	30°	30°
I Dump height with standard bucket	2396	2526
J Height to bucket hinge pin	3048	3259
K Dump reach at maximum height	933	1014
L Dump angle at maximum height	37°	37°
M Rollback fully raised at maximum height	94°	94°
N Width over standard bucket	1880	2032
O Turning radius with standard bucket	2104	2301
P Track, 450 mm tracks	1382	1531
Q Width over tracks, 450 mm tracks	1782	1981



FINANCING OPTIONS

24, 36, OR 48 MONTH FINANCING*

Take advantage of 24, 36 or 48 month financing programs starting from **0% interest** and improve your cashflow. Ask your dealer for the financing offers available.

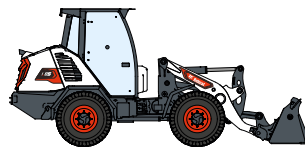
100 MACHINES / 150 ATTACHMENT FAMILIES / 1 TOUGH ANIMAL



**SKID-STEER
LOADERS**



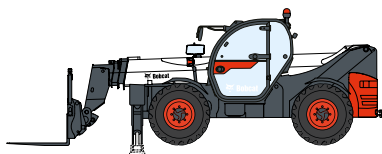
**COMPACT TRACK
LOADERS**



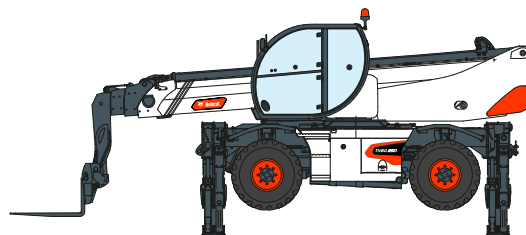
**COMPACT WHEEL
LOADERS**



**SMALL ARTICULATED
LOADERS**



TELEHANDLERS



ROTARY TELEHANDLERS



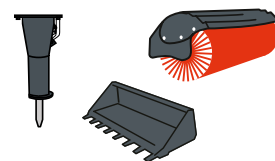
**LIGHT COMPACTION
EQUIPMENT**



**MINI TRACK
LOADER**



COMPACT EXCAVATORS



ATTACHMENTS



www.bobcat.com

Bobcat is a Doosan Company. Doosan is a global leader in construction equipment, power & water solutions, engines, and engineering proudly serving customers and communities for more than a century. | Bobcat and the Bobcat logo are registered trademarks of Bobcat Company in the United States and various other countries. ©2022 Bobcat Company. All Rights Reserved.

©2022 BOBCAT B4501712-EN (01-22)



*Financing options may vary by country and dealer. Always ask your dealer about currently available financing options. Terms and conditions may apply.

Doosan Bobcat EMEA, U Kodelky 1810, 263 12 Dobříš, Czech Republic

