

Bobcat Excavators

Launch of 8 tonne Bobcat Excavator

New R2-Series E88



In 2021, we launched our first R2-Series Excavators – the E50z, E55z and E60 – which have been very well accepted. As 2022 approaches, we are pleased to announce the introduction of the next R2-Series excavator - the new E88 in the competitive 8 tonne category. The new E88 R2-Series model with its Stage V compliant engine is replacing the current E85 M-Series machine, providing you with the full R2-Series Bobcat Experience and adding new features and options such as the AUX4 tilt coupler line, the AUX5 hydraulic coupler line and a longer undercarriage.

The E88 delivers big performance in a compact dimension machine, superb operator comfort and excellent stability with high lift capacity. Robust and dynamic design in line with the DNA of the R2-Series family is coupled with improved fit and finish. Bobcat's acknowledged productivity is coupled with smooth controllability thanks to low effort joysticks and intuitive 5- or 7-Inch displays, class-leading visibility and exceptional transportability for its weight class. Large easy openable covers provide convenient, ground level access to all service points and for maintenance checks.

Production of the new E88 R2-Series model starts in January 2022 in Bobcat's North American production facility and the first machines will be shipped to dealers in February 2022.

Key Product Features

Operator Comfort

- Large operator space
 - Best in class visibility and comfort
 - Large glass surface area and narrow, solid pillars
 - Easy to open and close front frameless window, RH sliding window and door.
- Ergonomic travel controls with one piece composite travel pedals
- Joysticks, switches and displays with intuitive ergonomics
- Low effort joysticks
 - optimized control forces
 - ergonomic handles
- Comfortable high back seat with head rest, optionally heated
- Safe and Comfortable Entry/Exit
 - Special type of 3D handles
 - Wide door opening not restricted by raised left joystick console
 - Anti-slip step on undercarriage
 - Foot space above the track
- Low operator noise and vibrations, low bystander noise level
- Powerful cab heating and air conditioning, precisely adjustable, optionally with automatic temperature control (Auto HVAC)
- Displays for easy operation
 - standard Bobcat 5" display
 - optional 7" Bobcat touch display

Ease of Use & Performance

- Confidence-boosting stability
 - increased 360-degree stability
 - 5 dual flange rollers on each side – improved stability and drive comfort
 - enhanced counterweight design
 - improved weight distribution
 - extended track length for front stability with blade up
- Controllability and smoothness
 - optimized setting for the main valve
 - precise low-effort joysticks
 - proportional controlled boom swing with switch on LH joystick
- Increased power output and torque compared to M-Series, better engine output curves

- Integrated Auto Idle with an electronic throttle control
- Easily accessible tie down points, upper structure tie down points for safe and easy transportability, oversized for use of any type of approved fastening method
- Fuel refill pump with auto off
- Depth check ready
- Up to 5 independent hydraulic auxiliary arm circuits
 - AUX1 - general purpose - standard
 - AUX2 - supporting functions (rotation) - option
 - AUX3 - clam shell bucket (bucket diverter) - kit
 - AUX4 - tilting coupler control - option
 - AUX5 - hydraulic coupler control - standard
- 'Advanced Selectable Auxiliary Control' system (A-SAC)
 - Allows customization of control pattern of joystick paddles to best fit operated attachment
 - Integral part of AUX4 option
 - Range of mechanical and hydraulic couplers: Hydraulic or Mechanical Pin Grabber QC45
 - Hydraulic or Mechanical German Style system QC08 (incl. hook lift)
 - Hydraulic or Mechanical German Style system, tilt, TC08 (incl. hook lift)
 - Mechanical Klac System F

Durability & Reliability

- Proven Bobcat Stage V engine technology for the best performance, reliability and parts commonality
- R2-Series Fit & Finish - Exterior covers, cab, workgroup
- Dynamic and robust design to avoid risk of downtime
 - counterweight and robust steel side channels protect the components inside
 - protected hoses, pipes, valves, lights and other components important for excavator' functions
- Blade design to enhance robustness, dustpanability and self-cleaning

Maintenance and Service

- Bobcat's well appreciated access for regular maintenance and service
 - comfortable opening and closing of tailgate and RH cover
 - all maintenance points clearly described and easily accessible from ground level
- Storage Areas
 - dedicated storage for grease gun
 - toolbox storage
- Increased troubleshooting via state of the art displays

- Machine IQ telematics (Europe only) - KIT only

Easy to clean outside and inside (smooth surfaces, water resistant materials, flat floor and 2-piece floor mat)

E88 R2-Series highlights

Operator comfort at the top of its class

Like previous Bobcat R2-series machines, the new E88 continues to develop the philosophy of 'built around the operator'. The spacious cab with plenty of headroom and legroom retains the proven design of the E60 cab and gives the operator the environment to power through long days and tough jobs.

The solid cab structure meets the standard FOPS I level and can be upgraded with a roof guard kit to comply with FOPS II.



Easy and safe to step in and step out thanks to the wide doors, unique 3D handle, anti-slip step on the undercarriage and foot space above the track, the cab makes the daily life of the operator an easier one.

The comfortable cloth high back seat is longitudinally and vertically adjustable, and is equipped as standard with a head rest and as an option, it can be heated. The seat adjustment is independent from the joystick and armrest adjustments and is applicable for any operator body weight and height.

A comfortable work environment regardless of the outside temperatures is ensured by powerful cab heating and air conditioning, which is precisely adjustable and can be used to quickly defog the windows. The E88 can be optionally equipped with automatic temperature control (Auto HVAC). The working environment has also been improved thanks to low noise and vibrations for the operator inside the cab and the bystander noise level is more than 2 dB(A) lower than the E85, so there is less impact on the surroundings while the machine is working.

The Joysticks and all the switches and buttons are logically and ergonomically placed around the operator and easy to reach. The layout will be familiar to all Bobcat MEX operators, as it is shared across all the machine sizes. Travel movements can be implemented using ergonomically shaped travel levers or by using sensitive one-piece composite travel pedals.

All important information is clearly displayed on the standard 5 Inch display or on an optional, class leading 7 inch touch screen display.

A choice of different storage spaces are available around the operator for documents, cell phones, drink bottles, cups of coffee and other items.

The cab is based on a proven concept, with each feature designed down to the last detail to make the operator feel at home and easily able to work all day long without getting tired.

Superior stability



R2-series machines are designed to achieve superior 360-degree stability in any situation, even when digging over the side or when handling heavier loads. They are well-balanced machines for operating with different attachments owing to improved weight distribution, extended track length, optimized counterweight design and dual flange rollers guaranteeing superb over the side stability. This assures operators of confidence in any situation, even without

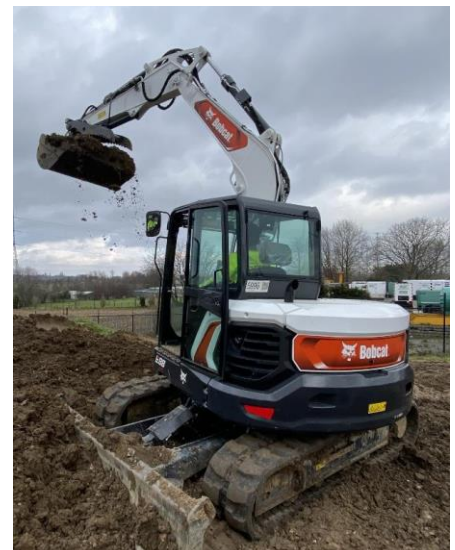
the optional add-on counterweight. The additional counterweight (= plus additional 407 kg) ensures the E88 offers the class-leading stability in the 8 t category, enabling a full range of attachments to be used without any worries. With the longer undercarriage and repositioned idler and sprockets, the E88 is continuously grounded even with the blade up.

OHD comes as standard equipment on the E88, for use when optimizing the machine with blade load hold. This is available as a KIT at the expense of losing the blade float function.

Excellent productivity & high performance

Low effort joysticks coupled with a new generation control valve make the workgroup feel like an extension of the operator's arm and every precise movement is fully under the operator's control. The latest generation of hydraulic control valve offers improved metering for smooth controllability and natural, finite movement of the workgroup and great joystick feedback. Operators will enjoy precise and predictable operation – including fast cycle times – for productive digging, level grading and other applications.

Proportional thumb-controlled boom swing offset control on the joystick allows the operator to make fine movements with low effort and maximum comfort.

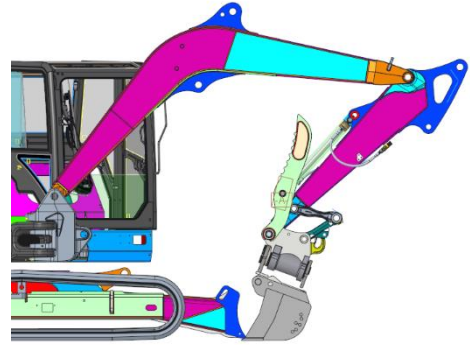


The high breakout forces in the E88 continue to be an essential part of Bobcat's DNA.

Whether it is traveling across a jobsite, backfilling or digging, the E88 excavator's hydraulic smart system evenly distributes the flow to ensure maximum performance.

The optimized blade has been designed with a self-cleaning shape for dustpanability with a short arm, power tilt and grading bucket, and contributes to improved stability.

The proven Bobcat Stage V 4-cylinder D24 engine offers a maximum power output of 48.5 kW (65 hp) and ensures highest performance and maximum reliability. To meet Stage V emission levels, the engine uses diesel oxidation catalyst (DOC) and a diesel particulate filter (DPF), to replace selective catalytic reduction to achieve maximum reliability, efficiency and environmental protection.



Panoramic visibility – at the top of its class



Unparalleled visibility improves job site awareness, making the machine more precise, easier and more productive to use, while keeping the jobsite safe.

The new E88 excavator is engineered with narrower, but solid cab pillars and ample glass surface area. Rear visibility, together with the downward sloping RH cover not restricting the view to the side, gives the operator the industry's best

visibility of the workgroup and the blade cutting edge as well as all around the machine.

Features like powerful demisting with adjustable heating vents in front, large heating vents in the rear, front and boom LED lights (protected against damage) and the wiper with an optimized working area ensure that visibility remains uncompromised in all conditions and at different times of the day or in rainy and foggy weather. A rear LED light is available as a kit.

For better awareness of the job site area, especially for working in confined spaces, the E88 can be equipped with the rear camera kit. This camera can be connected to the standard 5 Inch display or the optional 7 Inch touch screen display, both providing a high resolution view.

Robust design & Easy service and maintenance

The new R2-Series E88 is designed as a balanced machine in performance, compactness and stability. The rear overhang is only 327 mm (without an add-on counterweight), allowing this 8 t machine to be used in confined space areas. The dynamic and robust design reduces the risk of downtime, with the heavy-duty steel side channels and the counterweight acting as bumper to protect essential



components, as well as all the hoses, pipes, valves, lights and other sensitive components that are important for excavator functions. The design of the machine also eliminates the 'unicorn effect' of having the boom swing cylinder exposed during offset parallel digging, reducing the risk of damage to the surroundings and the cylinder itself.

The machine concept uses proven, reliable components (such as the engine, joysticks, cab etc) and if maintenance or service is needed, wide opening covers mean this can be done easily on the jobsite.

The E88 follows the philosophy of Bobcat's well appreciated access for regular maintenance and service, with large comfortable opening and closing covers allowing excellent access from ground level for all maintenance checks and service points. This means there is more time available to complete the work in hand with the excavator.

For daily maintenance, tools can be kept in the storage box under the right-hand cover and a grease gun is kept in a dedicated holder under the RH cover.

Also under the right hand cover is a well placed and accessible fuel transfer pump with an auto shut down function, which is standard on the E88 and makes refuelling a quick, clean and easy process.

The large external flat areas in the E88 simplify the cleaning of outside surfaces and help to keep the machine in perfect condition. Thanks to the use of water resistant materials in the interior and smooth surfaces, together with a removable 2-piece floor mat, it is easy to clean the inside of the cab as well.

Versatility



The new R2 Series E88 is available with Standard Arm and Long Arm configurations.

Up to 5 arm mounted hydraulic auxiliary lines and the award-winning A-SAC technology (Advanced Selectable Auxiliary Control) enable a wide range of machine customizations to match any attachment requirement, making this excavator an excellent tool carrier.

The AUX1 general purpose hydraulic line and AUX5 for hydraulic coupler control are standard equipment on the E88. The AUX2 hydraulic line for supporting functions such as rotation and the AUX4 hydraulic line for tilting control are available as an option. The AUX3 line for clam shell bucket (bucket diverter) operation is part of Bobcat's comprehensive kit list.

The Direct to Tank with electrical activation via the display interface and the Drain Line can also be ordered from the kit list. Depth Check Ready is a standard feature on the new E88, whilst the Depth Check system itself is available as a kit for Long Arm machines.

Steel tracks can be ordered as an option and segmented tracks can be selected as a kit. Rubber, steel and segmented tracks are interchangeable without the need to change undercarriage components.

To incorporate even higher robustness in the workgroup and arm coupler connection, the arm pins for coupler connection have a 55 mm diameter instead of the 45 mm components used on the M-Series E85. To preserve the usage of attachments that fit the current E85 M-Series, the matching range of couplers will be available for the new E88 – the Hydraulic and Mechanical Pin Grabber (with 55 mm diameter arm pins and 45 mm diameter bucket pins), Mechanical Klac F, and Hydraulic and Mechanical German Style Couplers with or without the Tilt function.

Transportability

As was mentioned above, the new E88 is a high performance machine in a compact package. In comparison with the current E85 M-Series model, the new machine is 100 mm narrower (but more stable with higher lift capacities) with a maximum width of 2200 mm. The maximum overall height of 2540 mm allows the machine to be transported on a container truck without the risk of being over the EU maximum legal truck height. The tie down points inside and outside the undercarriage where the machine can be secured during transport are easily accessible and oversized for use with any type of approved fastening method.



Intuitive operation



The new R2-Series E88 is designed to allow the operator to focus on their work and to operate the machine intuitively without excessive familiarization time. All controls, such as joysticks, switches and buttons are ergonomically placed around the operator within full view exactly where they are needed and expected and similar to where they are on other Bobcat excavators.

The interface between the machine and the operator is supported by the proven and robust 5 Inch easy-to-read display. The detailed full-colour display provides access to diagnostic and operating information, allowing the operator to work more efficiently and to troubleshoot problems in the field.

The optional 7 Inch Touch Display provides detailed machine information and unmatched device connectivity. The operator can quickly view and toggle through machine information and performance on the 800 x 480-pixel widescreen. It's also waterproof and hardened to minimize scratching. The additional functionality of the 7 Inch Display includes radio, music streaming via BT connection from mobile phones, hands-free calling and other functions.

The Depth Check interface and Rear-View camera can be connected with both available displays.

2-Speed travel is a standard feature of the E88, allowing for faster manoeuvres on the job site and to increase the productivity for long-haul jobs or for work on large jobsites.



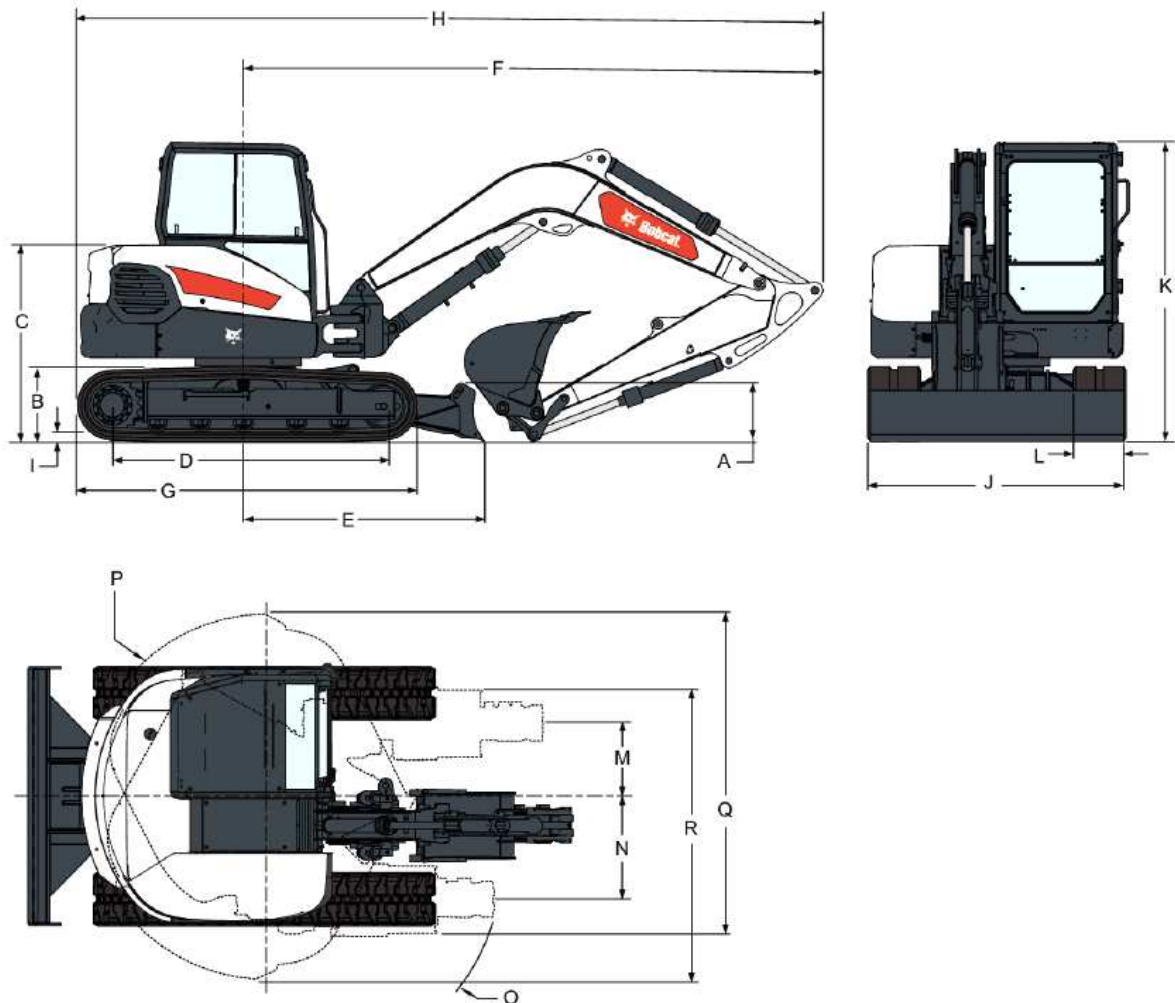
Auto-shift travel is a standard feature as well, shifting the machine out of high range and back again automatically, offering superb travel performance without having to manually downshift.

The blade float function simplifies grading and levelling. Blade float exerts a minimal, consistent downforce on the blade, with minimal operator input. This function is not compatible with the Blade Load Hold kit.

E88 Specification

Operating weight [kg] <small>(incl. cab, Standard Arm, 600 mm/223 kg bucket (ISO 6016))</small>	8994
Additional weight for additional counterweight [kg]	407
Additional weight for Long Arm [kg]	37
Additional weight for Hydraulic Pin Grabber coupler [kg]	87
Additional weight for steel / segmented tracks [kg]	16 / 74
Engine make	Bobcat D24
Engine model	4 cyl. / 2'4 l / Stage V
Maximum power [kW (hp) @ RPM] (ISO 14396)	48.5 (65) @ 2100
Maximum torque [Nm @ RPM] (ISO 14396)	249.2 @ 1600
Fuel tank capacity [l]	116
Travel speed, low / high range [km/h]	2.5 / 4.4
Pump capacity [l/min]	149
AUX 1 / AUX 2 flow [l/min]	95 / 62
Digging force, dipper-stick [kN] <small>(std. arm / long arm)</small>	39.1 / 35.3
Digging force, bucket [kN]	55.6
Sound level bystander [dB(A)]	96
Sound level operator [dB(A)]	77

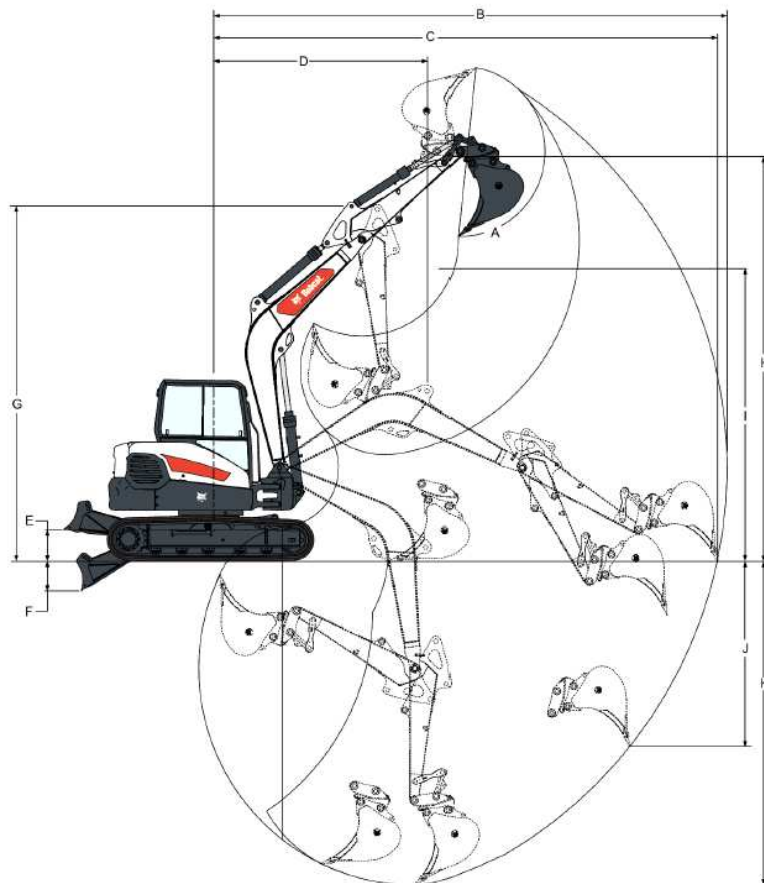
E88 Dimensions



A) Blade height	462 mm
B) Clearance, upper structure to ground line	710 mm
C) Ground line to top of engine cover	1666 mm
D) Length of tracks on ground	2311 mm
E) Machine center line to blade	2009 mm
F) Minimum radius in travel position Std. / Long Arm	4872 / 4886 mm
G) Overall length of track assembly	2896 mm
H) Overall length in travel position Std. / Long Arm	6329 / 6341 mm
I) Track lug height	30 mm
J) Blade width	2200 mm
K) Overall height	2540 mm
L) Track width (rubber / steel / segmented)	450 / 450 / 450 mm

M) Machine center line to working equipment center line, LH rotation	622 mm
N) Machine center line to working equipment center line, RH rotation	907 mm
O) Minimum turning radius Std. / Long Arm	2202 / 2345 mm
P) Swing clearance, rear (incl. add-on ctw.)	327 (450) mm
Q) Working width at maximum RH rotation (incl. add-on ctw.)	2600 (2707) mm
R) Working width at maximum LH rotation (incl. add-on ctw.)	2525 (2646) mm
Standard Arm Length (Arm pivot to Bucket pivot)	1840 mm
Long Arm Length (Arm pivot to Bucket pivot)	2180 mm

E88 Working Range



A) Bucket pivot angle	170°
B) Maximum reach of working equipment Std. / Long Arm	7225 / 7549 mm
C) Maximum reach at ground level Std. / Long Arm	7087 / 7418 mm
D) Maximum working equipment radius with boom at maximum height Std. Arm	2659 mm
D) Maximum working equipment radius with boom at maximum height Long. Arm	2964 mm

E) Maximum blade height	479 mm
F) Maximum blade depth	410 mm
G) Maximum height of working equipment	4983 mm
H) Maximum bucket tooth height Std. / Long Arm	6887 / 7115 mm
I) Maximum dump height Std. / Long Arm	4537 / 4765 mm
J) Maximum depth of vertical wall which can be excavated Std. / Long Arm	2587 / 2883 mm
K) Maximum digging depth Std. / Long Arm	4519 / 4859 mm

E88 - Order information

Series	Model	MRC	SN Prefix	AEM Size
MEX	E88E2 V	M3328	B4NL	6-10 T

4 pre-defined specifications are selectable in iStore

- Spec A - E88 Standard Arm – HVAC Cab / 5 Inch Display / Rubber Tracks / Heated Seat with Headrest / AUX2 Arm / AUX4 Arm / AUX5 / BT Radio / Object Handling Package / Fuel Transfer Pump with Auto Off
- Spec B - E88 Long Arm Basic – HVAC Cab / 5 Inch Display / Rubber Tracks / AUX5 / Object Handling Package / Fuel Transfer Pump with Auto Off
- Spec C - E88 Long Arm Mid – HVAC Cab / 5 Inch Display / Rubber Tracks / Heated Seat / AUX2 Arm / BT Radio / AUX5 / Object Handling Package / Fuel Transfer Pump with Auto Off
- Spec D - E88 Long Arm Full – Comfort Package (Auto HVAC & 7 Inch Display incl. Radio, hands-free and music streaming, keyless) / Rubber Tracks / AUX2 Arm / AUX 4 Arm / AUX 5 / Motion Alarm / Object Handling Package / Fuel Transfer Pump with Auto Off - €81773
- Custom Spec allows customer to specify their own specification.

7 Inch Display and Auto HVAC are selectable only in Comfort Package, cannot be separated

Add-on Counterweight can be selected with Standard Arm and Long Arm, only in Custom Spec

Articulated Boom option will be available from December 2022, limited allocations of current E85 Arti Boom M-Series will be available for 2022 season.

MRC	Option Group / Option ● – Standard ○ – Option - - not available	Spec A Std. Arm	Spec B Long Arm Basic	Spec C Long Arm Mainstream	Spec D Long Arm Full	Custom Spec
M3328-P01	Comfort Package Option					
M3328-P01-C01	No Comfort Package	●	●	●	-	●
M3328-P01-C03	Comfort Package Cab (AutoHVAC, 7Inch Display)	-	-	-	●	○
M3328-R01	Enclosure Option					
M3328-R01-C03	HVAC Cab	●	●	●	-	●
M3328-R01-C04	Auto HVAC Cab	-	-	-	●	○
M3328-R02	Tracks Option					
M3328-R02-C01	Rubber Tracks	●	●	●	●	●
M3328-R02-C02	Steel Tracks	-	-	-	-	○
M3328-R03	Arm Option					
M3328-R03-C01	Standard Arm	●	-	-	-	●
M3328-R03-C02	Long Arm	-	●	●	●	○
M3328-R03-C09	Long Arm with Add-On Counterweight	-	-	-	-	○
M3328-R03-C11	Standard Arm with Add-On Counterweight	-	-	-	-	○
M3328-R04	Ignition Option					
M3328-R04-C01	Key Switch	●	●	●	-	●
M3328-R04-C03	Keyless 7"	-	-	-	●	○
M3328-R06	Coupler Option					
M3328-R06-C19	Hydraulic Coupler Ready LA with Pin-on (AUX5) / Geith Ready Fixed Boom LA	●	-	-	-	●
M3328-R06-C20	Hydraulic Coupler Ready SA with Pin-on (AUX5) / Geith Ready Fixed Boom SA	-	●	●	●	○
M3328-R07	2nd Auxiliary Line Option					
M3328-R07-C01	No 2nd Auxiliary hydraulic line	-	●	-	-	●
M3328-R07-C02	2nd Auxiliary Hydraulic Line with Fixed Boom QC	●	-	●	●	○
M3328-R08	Hydraulic Clamp Option					
M3328-R08-C01	No Clamp No coupler	●	●	●	●	●
M3328-R09	E88E Brand Decal					
M3328-R09-C01	Std Decal	●	●	●	●	●
M3328-R10	Seat Option					
M3328-R10-C02	Deluxe Cloth Suspension Seat	-	●	-	-	●
M3328-R10-C04	Deluxe Heated Cloth Suspension Seat	●	-	●	●	○
M3328-R11	Motion Alarm Option					
M3328-R11-C01	No Motion Alarm	●	●	●	-	●
M3328-R11-C02	Motion Alarm	-	-	-	●	○
M3328-R13	Object Handling Option					
M3328-R13-C03	Object Handling Package	●	●	●	●	●
M3328-R14	Display Option					
M3328-R14-C05	7 inch Display	-	-	-	●	○
M3328-R14-C07	5 inch Display	●	●	●	-	●

M3328-R17	Display Option					
M3328-R17-C01	Fuel Transfer Pump YES	●	●	●	●	●
M3328-R18	4th Auxiliary Boom Option					
M3328-R18-C01	No 4th Auxiliary Hydraulic Line / Boom 4th AUX NO	-	●	●	-	●
M3328-R18-C02	4th Auxiliary Hydraulic Line with Fixed Boom QC	●	-	-	●	○
M3328-R19	4th Auxiliary Line Option					
M3328-R19-C01	No 4th Auxiliary Hydraulic Line / Arm 4th AUX NO	-	●	●	-	●
M3328-R19-C02	4th Auxiliary Hydraulic Line on Standard Arm / Short Arm 4th AUX YES	●	-	-	-	○
M3328-R19-C03	4th Auxiliary Hydraulic Line on Long Arm / Long Arm 4th AUX YES	-	-	-	●	○
M3328-R21	Articulated Boom Option					
M3328-R21-C01	Fixed Boom	●	●	●	●	●
M3328-R26	Radio Option					
M3328-R26-C01	Radio No	-	●	-	-	●
M3328-R26-C03	Radio Bluetooth	●	-	●	-	○
M3328-R26-C06	Radio in 7" Display	-	-	-	●	○
M3328-R27	JPS Option					
M3328-R27-C01	HYD JPS No	●	●	●	●	●
M3328-R43	E88E Floor Option					
M3328-R43-C01	Floor Artic Boom Ready - NO	●	●	●	●	●
M3328-R51	Bobcat Telematics Option					
M3328-R51-C01	No Telematics	●	●	●	●	●
M3328-R51-C04	Bobcat Telematics Europe	-	-	-	-	-
M3328-R57	Disconnect Switch Option					
M3328-R57-C02	Disconnect Switch	●	●	●	●	●
M3328-R65	E88R EMEA Paint Option					
M3328-R65-C01	Bobcat White Standard Arm	●	-	-	-	●
M3328-R65-C02	Bobcat White Long Arm	-	●	●	●	○

E88 – Available kits

Beacon	Block Heater	Case Drain Line
Counterweight Add-On	Depth Check (Laser & Receiver)	Depth Check (Long Arm only)
Direct to Tank	Clamp Diverter	Front Guard - Special Applications
Fuel Filter Indicator	Keyless (keypad) Ignition	Load Hold Blade
Motion Alarm	Radio	Rear LED light
Rear View Camera	Strobe	Telematics Machine IQ
Top Guard (FOPS II)	Tracks Steel	Tracks Segmented
Window Access	Window Shadow	

E88 Timeline

- Price list published in December 2021
- Specification published in December 2021
- Leaflet December 2021
- Full brochure & EMEA launch videos April 2022
- iStore opening January 2022
- product presentation for dealers
 - 18th January (English)
 - 1st February (German)
 - 8th February (French)
 - 15th February (Italian)
 - 17th February (Spanish)
- Start of Production (E88 Mono Boom) January 2022
- Shipments to Dealers (E88 Mono Boom) February 2022
- Shipments to Dealers (E88 Arti Boom) December 2022