

Think electric.



TECHNOLOGY OF THE FUTURE, TODAY.



mini Z400



ELISE 900

DREAMS COME TRUE



„This is my childhood dream come true! Electric and truly useful, powerful machines that actually move and work by themselves. They are agile and capable, they help people and at the same time they don't harm the environment at all.“

No virtual world, no Lego toys, no little models I used to play with as a kid. But real machines, our skid steer loaders. And you know what the best part is? They're made in our new factory in the Czech Republic, just outside of Kladno.

Made by our own team of people who enjoy working in our company, feel comfortable working with us and are also incredibly skilled, honest and hardworking. Some of them have been by our side since the beginning, since moving from a neighbouring country. We managed to move and grow in record time, with uncertainty, respect but also anxiety. It's not always easy, but we enjoy it. We want to work honestly and fight for our place in the sun, in a fierce competition from all over the world. But we believe. We believe in ourselves, in our work, in our development, in our abilities and we believe in our machines.

We have combined the best of the Czech and Slovak teams and we have electric machines that we are extremely proud of - Elise900 and MiniZ. And I personally hope that it doesn't end just with them...

This is the realization of my childhood dream and proof that dreams and not only children's dreams really do come true!

MARTIN HAVRDA
CHAIRMAN OF THE BOARD
FIRSTGREEN Industries

Arbol is a tree that grows and branches gradually. Its strength comes from its roots, which must be strong, deep and stable. And on such a foundation lies the common dream of doing business properly, responsibly and with a vision of the future.



FIRSTGREEN Industries, a. s.

Innovative production of 100% environmentally friendly loaders with a global reach.



ellipse aero, s. r. o.

In-house development and production of original ultralight aircraft with a completely unique patented elliptical wing design with the highest degree of safety



Arbol Rokytnice, s. r. o.

Phased development of exclusive and original mountain apartments in one of the best mountain resorts in Rokytnice nad Jizerou in the heart of the Krkonoše Mountains.



Apartmány Konírna

Development of luxury mountain apartments within the Dřevona recreational area.



Apartmány Dřevona

Complete reconstruction of a sports and recreation complex in the Jizera Mountains.



Planet A, a. s.

Building a telecommunications company with subsequent sale to a strategic partner.



Česká lékárna, a. s.

Establishment of a chain of pharmacies with subsequent sale to a domestic financial group.

HISTORY

ELECTRIC FLASH

Slavo Petrevec and Ján Hanes come up with their own idea of developing an electric skid loader. There is no such machine on the market, its advantages are indisputable and, as proper designers and dreamers, they begin to turn their dreams into reality.

2013

VISION ON PAPER

The first drawings of the Elise 900 are born. It's not called that yet, but the machine is getting its real shape. These need to be backed up by calculations and the right choice of components so that it meets all modern expectations of a „clean“ machine with minimal operating costs. Slavo and Ján are looking for partners to help them with their dream.

2014

FIRST PROTOTYPE OF ELISE900

The first prototype of the Elise 900 skid steer loader has been launched in cooperation with Slovakian colleagues from FIRSTGREEN. Robust, powerful, environmentally friendly and, above all, the only one in the world. The whole team is increasingly convinced that this is a path worth taking.

2017

FROM PROTOTYPE TO PRODUCTION

A long series of tests have confirmed the functional and technical parameters and the first batch of 20 units for Slovak customers is on its way to production. The necessary processes are being set up to start mass production in Velká Lehota, Slovakia.

2018

ENTERING THE MARKET

The first 20 machines under the FIRSTGREEN brand found their satisfied owners. The team believes that the time is now right to prepare for international expansion and is looking for a partner to help them take the Elise 900 from Velká Lehota to the world. The courtship with Martin Havrda and Václav Audes' Arbol Capital will begin in October 2019. Janko and Slavo already have a concept for a Mini Z compact loader in the works.

2019

INTRODUCTION OF ARBOL CAPITAL

The production of the Elise 900 and MiniZ is now carried out under a separate business entity and both machines are entering the global market. The project has started in Slovakia and surrounding countries and is rapidly expanding to other countries not only in Europe but also overseas. The new sales team has big ambitions and is preparing to build an international dealer network.

2020

MOVING TO CZECH REPUBLIC

Arbol Capital, together with key managers and engineers, controls 100% of the company's shares. Along with the change of ownership, production is being moved to a brand-new production facility in Velká Dobrá. In September 2021 the first machine is produced in the new factory and in October we officially introduce the factory to our partners and customers. We can now produce up to 700 machines per year. We end the year with 50 dealers in 37 countries.

2021

THE FUTURE IS ELECTRIC

Our plans are once again a bit more ambitious. We are expanding the team, focusing on new markets and the R&D team is working with suppliers to develop a new generation of Elise 900, MiniZ and electric attachments. And for our dealers, there is now a service and sales support department. And so far, we are still the only ones on the market...

350
Machines produced

90
Dealers

3
Generations of machines

50+
Staff

1500 m³
Of production capacity

2022

2023

When we know what we want to achieve, anything is possible. We have a single-layer and flexible company structure. We're not a start-up or a corporation. We combine the best of both worlds.

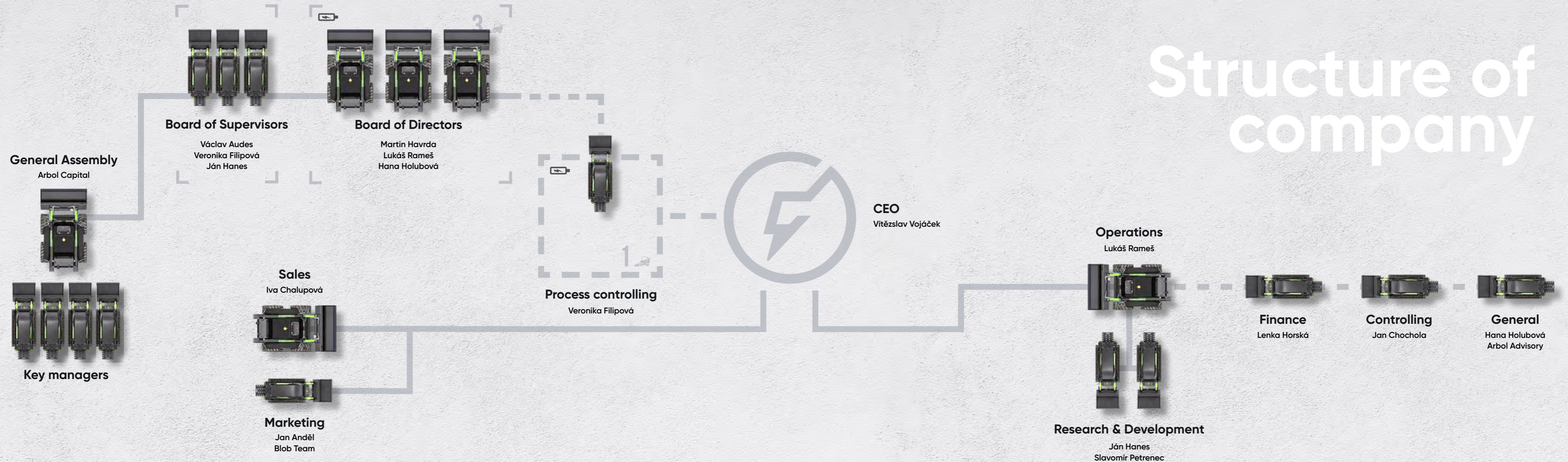
„Every unsolvable problem has a simple solution. You just have to find it in a reasonable amount of time.“

SLAVO PETRENEC
CHIEF DEVELOPER



FLEXIBILITA

Structure of company



We always lay our cards on the table and play fair. And it doesn't matter whether it's our employees, partners, suppliers or customers.

„Respect fair-play, tell the truth. That's fundamental. Whether in sport or at work, in life. It is not just about being able to win, but to lose with your head held high, humility and respect for your opponent. To learn from your losses and move on.“

MARTIN HAVRDA
CHAIRMAN OF THE BOARD



HONESTY

UPŘÍMNOST

Martin Havrda

CHAIRMAN OF THE BOARD

Sport has been with me all my life. Apart from swimming, tennis and skiing, it was mainly modern pentathlon, five discordant, even aristocratic disciplines combined into one. Perhaps this is the source of my desire to try new fields, to develop companies, but also my diligence and ability not to be afraid of failure.

I am an economics graduate, I spent the final part of my studies in the USA, where I also had the opportunity to run a business. Two key people have shaped my view of the world and how to behave in life and in business. My long-time modern pentathlon coach, with whom much of my youth was spent, and then my dad, with whom I started and ran several successful businesses together. First it was the pharmacy business where I gained experience alongside him. Subsequently, my team and I spent 12 years building and running a telecoms company that became an exciting target for a multinational telecommunications operator.

„Providing financial stability, strategic management and directing everything to work perfectly, grow healthily and prosper.“



Vítězslav Vojáček

CEO

I have known Martin Havrda and his father for many years, and during that time we have developed a successful cooperation and relationship. I have worked in small, medium and large companies. Start-ups and corporations. And I'm very clear. Start-ups or companies in the early stages of development are many times more attractive to me. They force you to think about how to move the company forward, they force you to make decisions, then change them and maybe even correct the mistakes that have been made. It forces you to study the experiences of others, to repeatedly return to the same situations and revise them.

All this is tiring, but also exciting. But the main bonus of this situation is that one can influence things and the final effect is a product on which one's signature is visible. It's a bit like bringing up a child.

„My job at FIRSTGREEN Industries is the general responsibility for fulfilling the shareholders' assignments. I personally have the ambition to exceed them, because our product deserves it.“

Lukáš Rameš

MEMBER OF THE BOARD, COO

I graduated from CTU and then spent some time teaching future generations in IT. However, quite soon I moved into the real world of IT. I joined Martin and Hanka's team in 2012 at Planet A. At the end of 2020, I took over the position of Chief Operating Officer also at FIRSTGREEN Industries.

I enjoy seemingly ordinary things. Working in the garden, working on the house I built almost entirely with my own hands, trips with my daughters. Or maybe a „cold one“ with friends at a raft in Central Bohemia, where I have lived all my life.

This practical life attitude allows me to accomplish things that sometimes seem like „mission impossible“.

„I enjoy being with my colleagues directly in on the production floor, helping them solve specific tasks during assembly, putting my hands to work. And I also enjoy coming up with all sorts of improvements that could take the machines up another notch.“



Hana Holubová

MEMBER OF THE BOARD

I spent the first part of my professional life in the healthcare sector, but after my maternity leave, I took part in developing the family telecommunications company Planet A together with Martin. After its sale, I continued with Martin to the investment group Arbol Capital, where I am in charge of the operational running of the whole group and all its portfolio companies.

At FIRSTGREEN, as a member of the Board of Directors, I mainly take care of procedural matters, contractual relations and personnel policy.

„I believe that the people I work with across all of our companies share a desire to do original and unusual things. The machines manufactured at FIRSTGREEN are perfect for this purpose.“



We are not just a company that is economically successful. We are people and we care about others. We care about our employees, our co-workers. We care about our partners, our customers. We care about the country in which we do business. We pay our obligations and we don't look for loopholes. We care about our environment, nature, our children and the world around us. We are a responsible company with everything that goes with it.

„We can do even the simplest, most insignificant thing in the world, but we do it to the best of our ability.“

TOMÁŠ BAŤA

CZECH "KING SHOEMAKER"
AND FOUNDER OF THE BAŤA EMPIRE



RESPONSIBILITY

ZODPOVĚDNOST

Václav Audes

CHAIRMAN OF THE SUPERVISORY BOARD
LEGAL AFFAIRS

Before I graduated from Prague Law School, I spent half of my life abroad - in India, Germany, France and Spain.

Today, I am a partner at Havel Partners, a law firm that for many years has provided legal services to the Havrda family in all areas of their business and private activities. This cooperation has gradually grown into a business and personal friendship. The broader spectrum of family investments and the need for professional management resulted in the establishment of Arbol Capital. Here, I am involved in the investment strategy and I'm responsible for the investment pipeline, trading and legal compliance areas.

„The countries I have lived in have enriched me with one insight: no matter whether a country is poorer or richer than the Czech Republic, there are always people who are a fountain of wisdom, have great goals and are an inspiration for a truly fulfilling life.“



Veronika Filipová

CONTROLLING

I started my legal career in 2005 by studying at the Police Academy in Prague in the Master's degree in Law and Security Service. I continued my studies at the Law Faculty of Charles University in Prague. I primarily focus on corporate and commercial law.

I met Martin, Lukáš and Hana for the first time professionally during the acquisition process of their previous telecommunications company, through which I guided them (on behalf of the selling party) together with Václav. Immediately afterwards we started working together within the Arbol Capital group.

In FIRSTGREEN I am responsible for all contractual relations, all legal ties and process controlling. I am also a member of the supervisory board.

„I love my family, my little daughter, travelling, sports and walking. When I am in nature, I feel immense satisfaction that I am actively contributing to its conservation through my work. From my position as an attorney, this seems seemingly unrelated and not directly influential, but my colleagues and I know that this is our common interest and we each contribute our part.“

We want to materialize our dreams and create machines that are unique, timeless and perhaps change the way we see the world. We want to do things that are meaningful, not only for ourselves, but for future generations.

„I believe in our products and in our entire manufacturing and development team. We can do great things together.“

LUKÁŠ RAMEŠ

COO & MEMBER OF THE BOARD



Research and development

We believe in continuous improvement of the capabilities of our machines, thus adding value to their existing and new owners. We work on expanding battery capacities for longer life and efficiency, updating control firmware and new capabilities in the form of eAttachments.



2022

ELISE 900^{MK3}

The new generation Elise900 introduces a range of enhancements to optimize operations, improve reliability and machine controllability from the perspective of end-user experience. Increased quality of metal parts, including new surface coating technologies, new motors for drive and hydraulics, technological preparation for future installation of additional components in combination with the additional possibility of and control of the machine's functions takes Elise one step further development step further.



2022

MINIZ400 - DEMOLITION EDITION

With the MiniZ, we focused on better balancing the machine and strengthening its design for better use in demanding conditions in demolition and construction. Demolition kit increases the machine's resistance to high loads such as such as hitting an obstacle.



2022



LITHIUM-ION BATTERY

For 2022, we have set ourselves the goal of providing our customers with an advanced lithium battery for both the Elise 900 and MiniZ. The aim of the development was higher battery capacity of up to 600 Ah, faster charging and more charging cycles. This new version is now available as packet option for both machines.



2022



eATTACHMENTS

To take the efficiency of our machines to the next level, we are developing electrically driven attachments, or eAttachments. These save more energy, are more efficient and easier to maintain thanks to their drive compared to conventional hydraulic motor-driven rotary peripherals.

2023



NEW MACHINE

Like any manufacturer, we realize that with our product portfolio must grow. For the year 2023, we have a surprise in the form of a brand-new machine that will fill the space between a small compact loader and the powerful Elise 900. And it won't just stay just that...

We were told that the electrification of heavy machinery was nonsense. We've proved it's not. It took a lot of courage. Courage to stand out from the crowd.

„Today, we are not afraid to take our electrified machines others don't want to go. Into the mountains, freezing temperatures and other extreme conditions, where our machines work flawlessly. Our courage has paid off.“

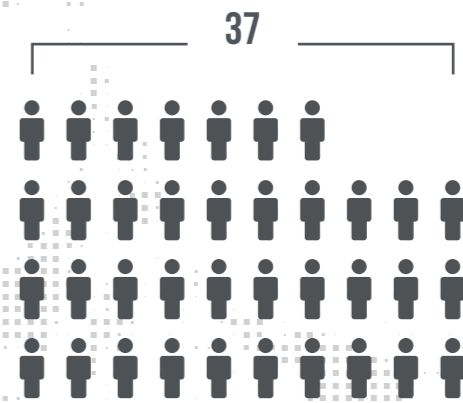
VÍTĚZSLAV VOJÁČEK
CEO



We think globally.



Dealer network in 2020



Dealer network in 2021



Dealer network expansion plan in 2022

Life taught us, that without work, nothing can be achieved. You cannot advance and grow. We are not afraid of working hard, because we know that's what creates success. Development, innovation, production, sales and marketing. We're moving all of this forward by leaps and bounds.

„I work a lot and hard. But I believe I'm being rational, healthy and efficient. Work is my driving force, motivation and fun. I would like my family to share the same life and continue my projects.“

MARTIN HAVRDA
CHAIRMAN OF THE BOARD



Manufacturing the machine

3 days

complete assembly

Production hall

1500 m²

of assembly and storage areas

Manufacturing capacity

350 units

in single shift operation

Total capacity

750 units

per year*

Number of staff

24+

in assembly and logistics

Structure

50/50

Elise 900 and MiniZ**

*with the option to increase capacity

**on four assembly lines

We all have only one health and being healthy is essential. We make sure that our employees have the best conditions for work. Our machines are quiet and do not pollute their surroundings with emissions and odours.

„In the courtyard of the house where I live recently an old house was being demolished and I wish our machines were working on it. It would certainly make it much more pleasant to wake up to birdsong rather than the throbbing noise of diesel machines. Silence heals and our cities deserve a little peace and quiet.“

VÍTĚZSLAV VOJÁČEK
CEO

PEACE & HEALTH

ZDRAVÍ A KLID

Sustainable company

We are proponents of a sustainable society and rely on the ESG criteria methodology.

We focus on innovation in our technology, strict adherence to internal procedures, ethical behaviour with our partners and employees, as well as environmental sustainability.

Environment

- › Recyclable products
- › Emission-free operation
- › Use of alternative energy sources
- › Electricity in production
- › Bio heating of production halls
- › Consistent recycling of waste
- › Environmentally friendly means of transport

Social

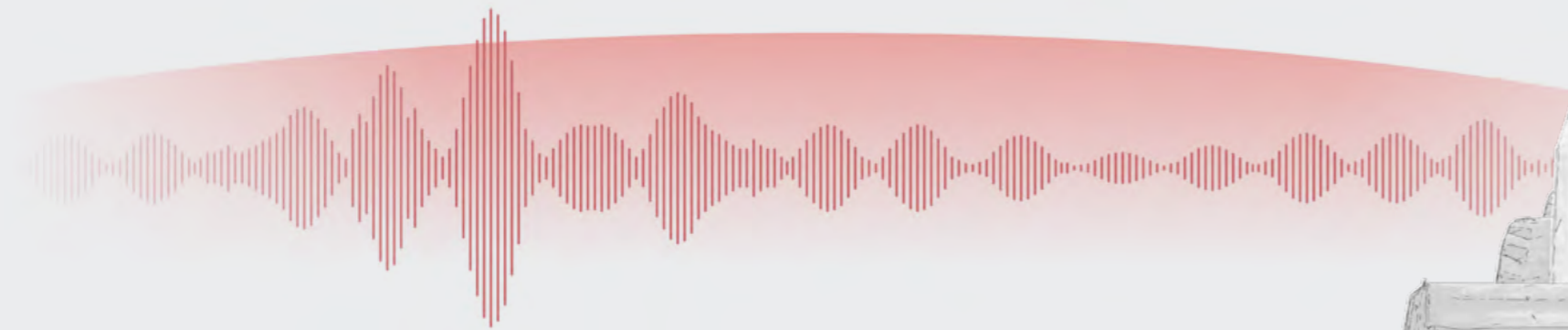
- › Focus on consumer protection
- › Diversity of employees in all organisational units of the company
- › Respect for human rights, dignity and quality of working life
- › Company Code of Conduct

Governance

- › Functional organizational structure
- › Employee participation in the ownership structure
- › Clear definition of responsibilities and authority
- › Process control mechanisms
- › Transactional relationships with employees, including remuneration system



Diesel machines



HIGH NOISE LEVEL

HIGH EMISSIONS

AD BLUE CONSUMPTION

NEED FOR REGULAR MAINTENANCE

Chasis height

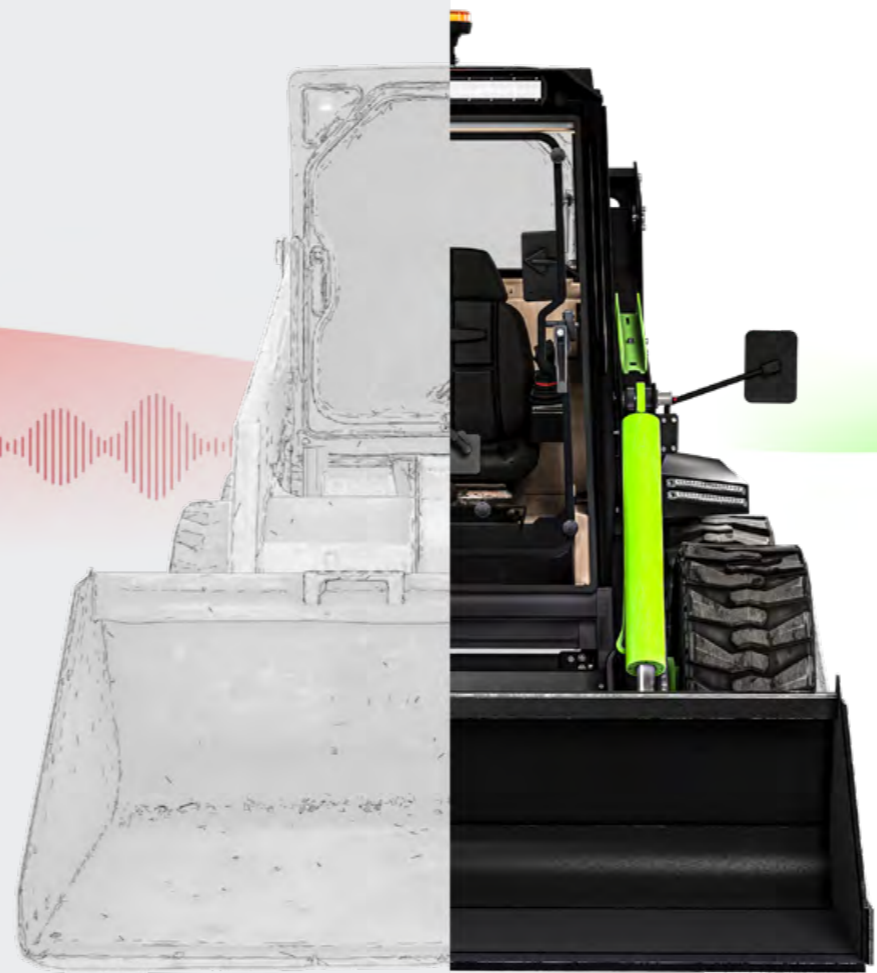
19_{cm}

Hinge pin height

3_m

Side tilt

36.5°



ELISE 900



SILENT OPERATION

ZERO EMISSIONS

MINIMUM OPERATING FLUIDS

MINIMUM MAINTENANCE

Chasis height

26_{cm}

Hinge pin height

3.6_m

Side tilt

47°

Everything we do should contribute to the sustainability of our health, the environment and the resources entrusted to us.

„Arbol means tree, and like our business, it grows and strengthens gradually but steadily. It is built on a solid foundation and deep roots.“

VÁCLAV AUDES

CHAIRMAN OF THE SUPERVISORY BOARD
LEGAL AFFAIRS

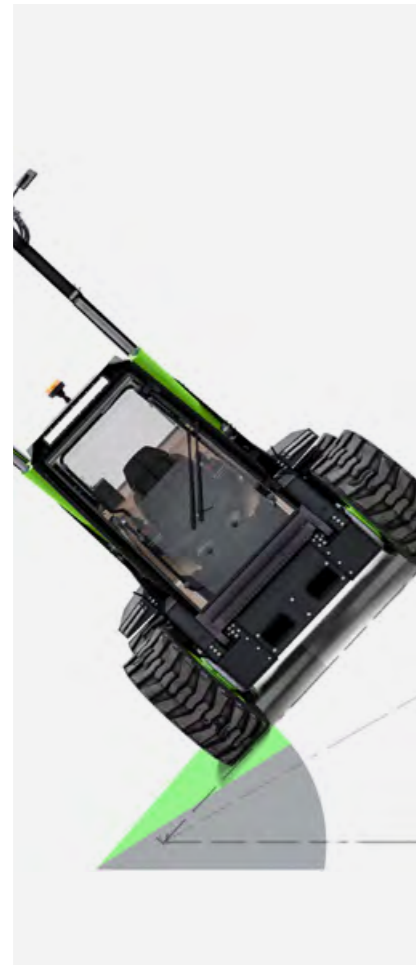


SUSTAINABILITY

UDRŽITELNOST

Key features

ELISE 900



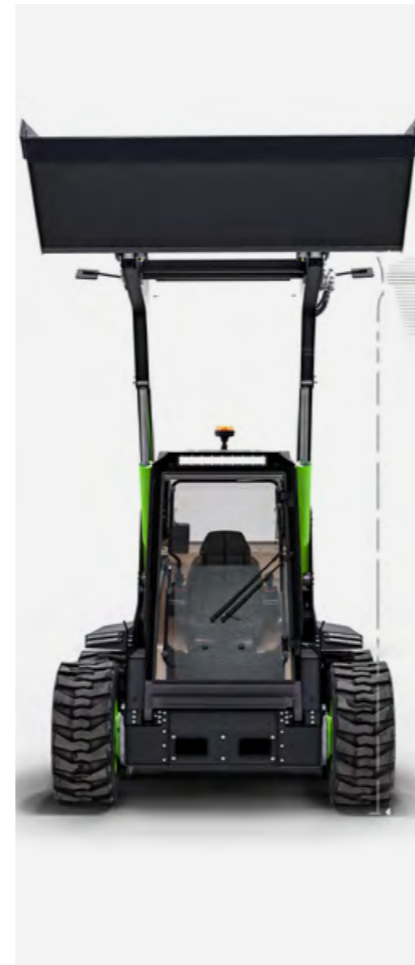
Side tilt 47°



Climbing angle 35°



Ground clearance 262mm



Hinge pin height 3637mm



Flexible prefabricated design



Zero emission, fully electric

The stable centre of gravity of the entire machine comes from the use of a uniform load, which is only made possible by the lead-acid battery technology.

Tipping load of 2400 kg

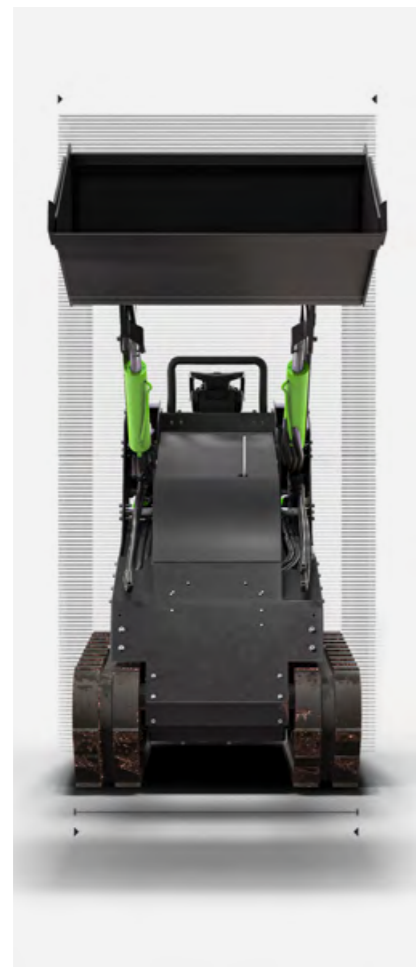


ROPS/FOPS certificated cabin up to 5000 kg

Speed of 12 km/h

Load of up to 1200 kg

Key features *miniZ400*



Compact loader with width of 790mm



Zero emission, fully electric



Remote control, removable controller, 50m of range



Tracked drive



Flexible prefabricated design



Two pairs of hydraulic cylinders

The stable centre of gravity of the entire machine comes from the use of a uniform load, which is only made possible by the lead-acid battery technology.

Tipping load of 800 kg



Speed of 5 km/h



Load of 400kg

We are not indifferent to the world in which our children and their children live and will live. We are not indifferent to the state of the environment.

That is why our machines do not pollute the environment with emissions or excessive noise. That is why we do not burden the environment with unnecessary waste. The batteries used in our machines are fully recyclable.

„Our projects must be more than just profitable. Our ambition is not to save the world, but to use smart technology to help solve local problems and develop local communities.“

VÁCLAV AUDES
CHAIRMAN OF THE SUPERVISORY BOARD
LEGAL AFFAIRS

ENVIRONMENT

VZTAH K PŘÍRODĚ

CLEAN ENERGY

We are aware that batteries are a key part of our machine's performance and reliability. That's why we are constantly striving to increase their capacity, shorten charging times and increase the number of charging cycles. Our newest lithium-ion battery, as well as older lead-acid got BST and MSDS documents and UN38.3 certification as well - their transportation is no problem whatsoever.



LEAD-ACID BATTERY



SMART LEAD-ACID BATTERY



5 h

charging time

Up to **8** h

of operation

100%

recyclable

1700

charging cycles



380 v

3phase charging with
Star Charger/HOPPECKE

220 v

1phase charging
ZIVAN

110 v

1phase charging
ZIVAN



We strive to keep our machines working flawlessly. To be trouble-free. To be easy to operate. In short, to make people's jobs as easy as possible.

„Since I was a child, the main thing that bothered me about my grandparents' farm was the breakdown of the machines, which added endless extra hours of work. Hours mean time, of which everyone has so little. That's why I always try to come up with a solution that saves time. That's why we make machines that are fail-safe.“

JÁN HANES

MEMBER OF THE SUPERVISORY BOARD
SENIOR DEVELOPER



RELIABILITY

SPOLEHLIVOST

SERVICE AND MAINTENANCE

We provide and continuously develop diagnostic tools for our clients with the ability to remotely access a specific machine to provide key operational information. Clients can also access all operational and service documentation through their user account.

- **NO OPERATING FLUIDS**

- **HIGH SERVICE LIFE OF HYDRAULIC FLUIDS**

- **REMOTE DIAGNOSTICS**

- **REMOTE REPAIRS**

- **COLLECTION AND ANALYSIS OF ERROR MESSAGES**

- **EASY REPLACEMENT OF ALL COMPONENTS**

- **MONITORING AND SOLVING OF ANY PROBLEMS**



We enjoy inventing new solutions. That's why our machines are modular. And that's why they, along all their functions, are remotely controllable, both in front of the remote control and via the mobile app. This makes our machines different...

„When I was a kid in kindergarten, I used to add little electric motors and lights to my cars, which was not met with understanding from my teachers. Fortunately, my dad continued to supply me with various servo motors. Thanks to him, I have been inventing new creative solutions to seemingly simple problems since I was very young.“

JÁN HANES
MEMBER OF THE SUPERVISORY BOARD
SENIOR DEVELOPER





BIG & SMALL
VELKÝ A MALÝ

MANUFACTURING

„Ever since my childhood we have had a small farm in our family and we take care of meadows and pastures and cattle. We often worked with our hands and manpower only, and I started thinking about machines that would make our work easier and save the environment at the same time.“

SLAVO PETRENEC
SENIOR DEVELOPER

„I enjoy it immensely when I bring back the sound of an old radio or get an old car up and running. I like vintage cars, from which you can learn the work of the old masters who found simple solutions in complex machines. I then use this experience to further develop our technology.“

JÁN HANES
SENIOR DEVELOPER



We're growing exponentially.

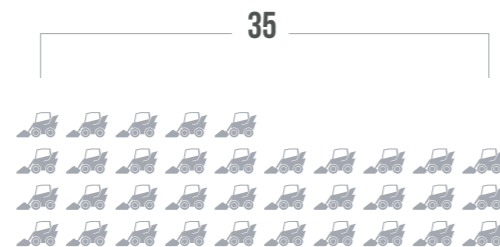
Number of machines produced and company turnover.



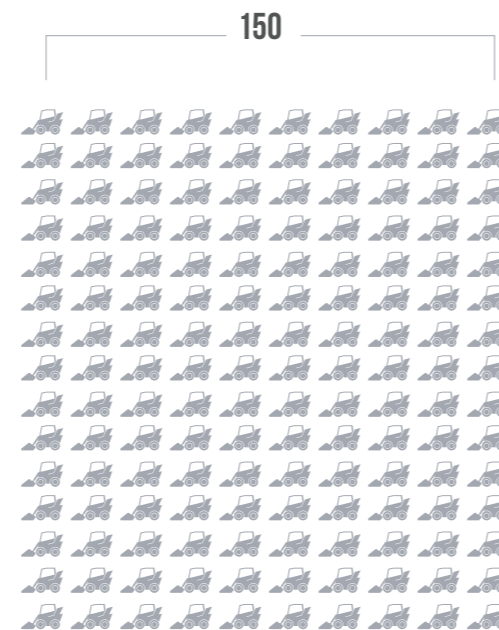
2018



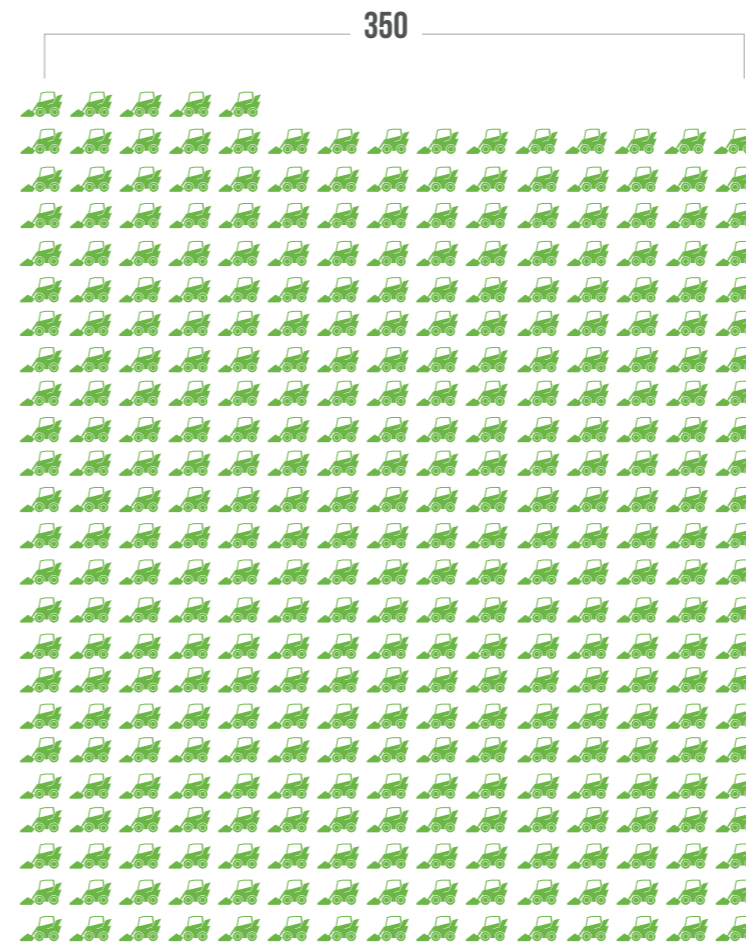
2019



2020



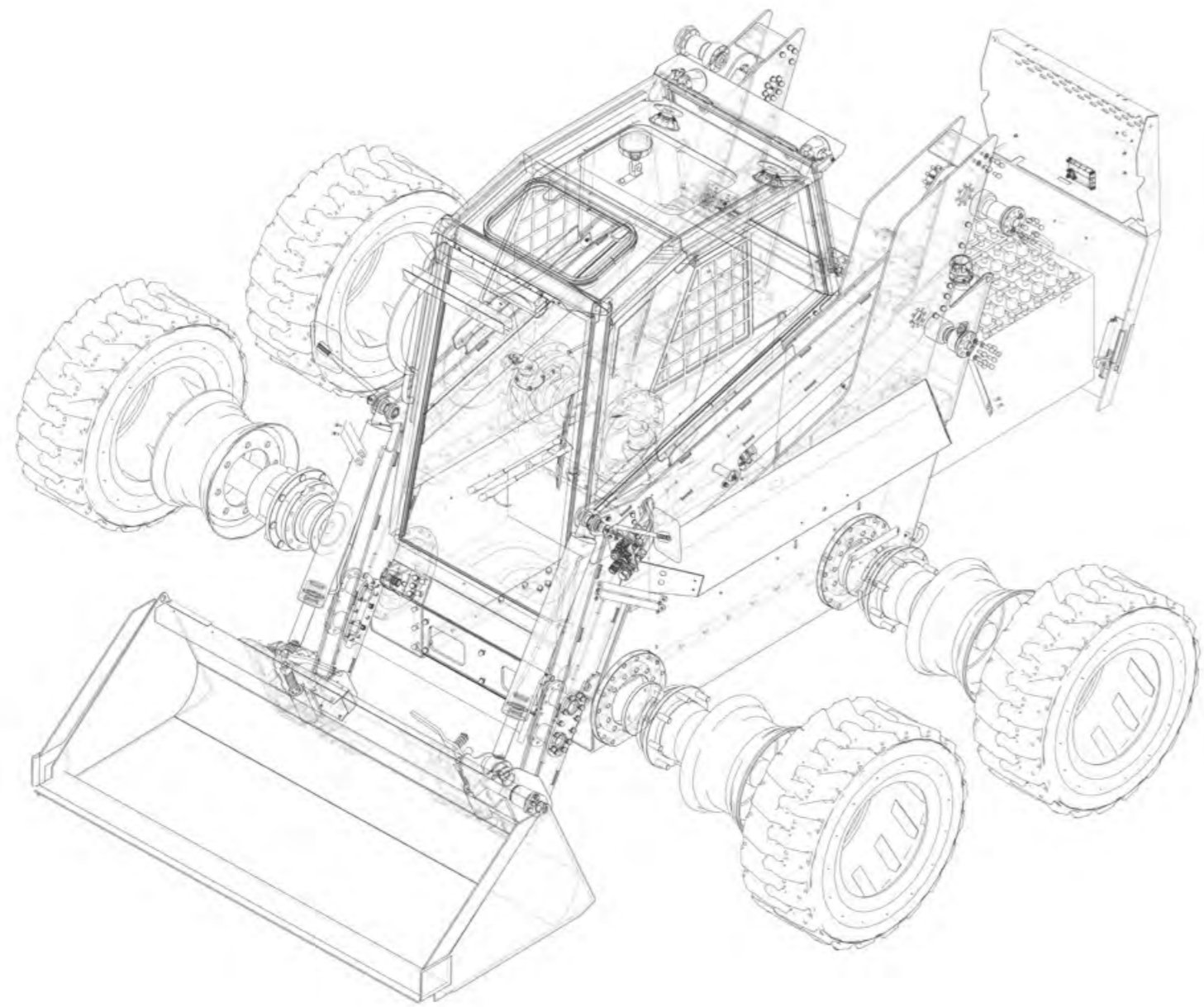
2021



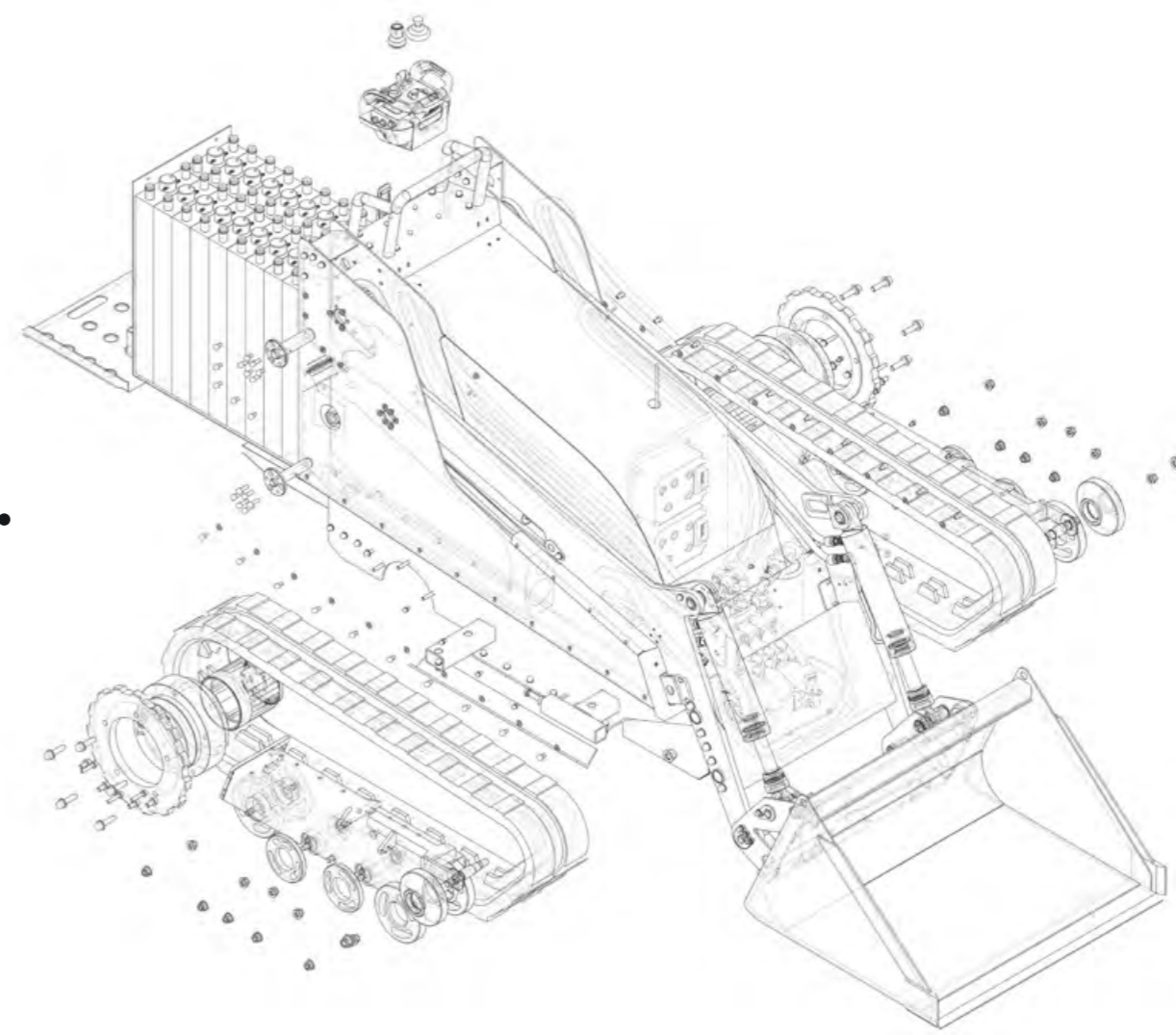
Plan for 2022

COMPANY TURNOVER

2020	35 000 000 Kč
2021	142 000 000 Kč
2022 by plan	350 000 000 Kč



Modular construction.



ELISE 900 MK3

Third generation loader.

100% ELECTRIC

ZERO ENVIRONMENTAL IMPACT

GRAVITY BALANCING

HIGHER CLEARANCE

HIGHER LIFT THAN COMPETING MACHINES

WEIGHT AND STABILITY

MICRO DRIVE FOR SMOOTH AND CONTROLLED MOVEMENT



Powered with technology.

Elise 900. The world's first electric skid steer loader represents the highest technology and years of experience of FIRSTGREEN Industries.



Battery endurance

2-8_h

with 400 Ah battery,
up to 6 hours with 240 Ah battery

Hinge pin height

3637_{mm}

356mm/14 inch higher reach
than the competing average

Side tilt

47°

10° higher tilt angle than
competing average

Chassis Clearance

262_{mm}

44mm/1.73 inch higher
than competing average

Tipping load

2400_{kg}

with 400 Ah extended battery

Loading capacity

900_{kg}

and 1200kg/3086lbs when using
400Ah capacity extended battery

ELISE900 MK3

Discover new generation.



Surface treatment

The third generation Elise900 is different at first glance. Thanks to new surface treatment technology and powder coating, the machine is now more scratch and rust resistant. That gives it an attractive appearance, improves washability and makes for easier maintenance.



Joysticks

The control joysticks have been completely replaced. They are now more precise, with less resistance and the possibility of adjusting their parameterization, so it is a more intuitive control system that can be customized according to your own preference.



Hard-mount display

A major change to the machine's controls is the new option of hard mounted display, an accessory that acts as the machine's central control panel. It offers a real-time overview of the machine's tilt, along with sub-menus for error messages and advanced diagnostics.



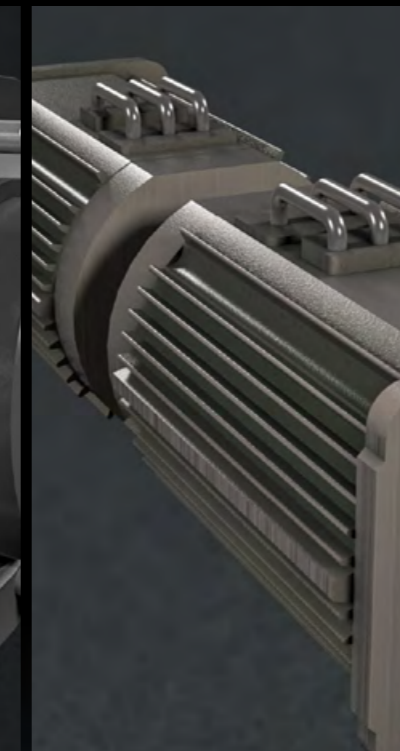
Hydraulic motor

The third generation Elise also brings the new option of driving without the hydraulic pump, when the system switches to stand-by mode. This not only allows the Elise900 to operate more quietly when moving between locations, but also, of course, to save energy.



Electronic brake

The brake system has also been changed. The third generation no longer features hydraulic brakes. We've fully replaced them by an electromagnetic braking system. This offers greater stability and confidence when stopping on a slope and simplifies maintenance.



Electronic drive motors

The Elise900 now features European electric motors with 40Nm more torque. More power means smoother, more responsive turning. The power is also evenly distributed between forward movement and turning resulting in better precision and comfort for the operator.



Hydraulic cylinders

We have also improved the hydraulic cylinders. Their new generation is made of higher quality materials, using stronger metals, and a reinforced piston rod. These improvements increase their resistance to damage, longevity - reducing the need for servicing or replacement.

www.firstgreenindustries.com/en/elise-900#improvements



Find more improvements of the third generation Elise on our website.

miniZ400

Compact loader

100% ELECTRIC

ZERO ENVIRONMENTAL IMPACT

GRAVITY LEVELLING

COMPATIBLE DESIGN

IDEAL FOR INDOOR CONSTRUCTION

EXTREME MANEUVERABILITY

BREAKTHROUGH DRIVE-TRAIN



Powered with technology.

MiniZ. The world's first electric skid steer loader represents the highest technology and years of experience of FIRSTGREEN Industries.



Battery endurance

4-8_h

depending on use and load

Maximum lifting height

2070_{mm}

Class leading for
extreme versatility

Load capacity

400_{kg}

Ultimate power in
a small package

Compact dimensions

1150<sub>height
mm /</sub> **790**<sub>width
mm</sub>

suitable for standard doors

Remote control

50_m

Safe, controlled ease
of operation

Battery capacity

225_{Ah}

Fully charged in less
than 5 hours

REMOTE CONTROL

Our machines can be controlled conventionally by an operator inside the cab using a fixed control panel or a mobile phone app.

For added safety, the machine can also be fully controlled via joystick remote control, and the remote-control function in the mobile app can also be used for standby machine operation with direct visibility.

Control your machine from the warmth of your office. Teleoperation is a remote control of a machine using an internet data network (i.e. Wifi or 5G). The machine is equipped with cameras and sensors. That means the operator is able to control the machine remotely from anywhere in the world – safely and comfortably.



Joystick controller

Elise900 app for iOS and Android (2020)



Bluetooth connection

Radio connection



Mobile app

Mobile + Device + Joystick (2020)



Control panel

EXTENSIVE APPLICATION POSSIBILITIES

Elise900 and MiniZ400 make for a helper even in previously unthinkable places, environments, conditions and terrains. This also makes them unique machines.



Property management



Livestock production



Interior construction



Urban construction



Ecological agriculture



Sports facilities



Check out our complete range of eAttachments for the full spectrum of our machine options.



SWEEPER



ANGLE SWEEPER



FORESTRY MULCHER



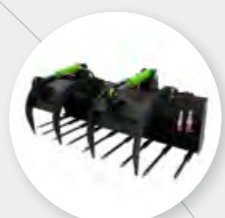
BRUSH CUTTER



SNOW BLOWER



CONCRETE MIXER



FARM FORKS



SIDE BRUSH SWEEPER

UNIVERSAL HELPER

FOR EVERY BUSINESS

F U T U R E I S E L E C T R I C



@firstgreen



@firstgreen



@firstgreen



@firstgreen



@firstgreen

FIRSTGREEN Industries +420737 63 37 33, info@firstgreenindustries.com, U Hellady 697/4, Praha 4, CZ, IČO 08900213

www.firstgreenindustries.com