



**HOLDER**

# HOLDER S SERIES

BENEFITS, FEATURES AND TECHNICAL DATA



# HOLDER S SERIES



## ATTACHMENTS

**Powerful attachments put to flexible use.**

- CAT II front power lift with a lift capacity of up to 2700 kg
- CAT II rear power lift
- Hydraulically tilting installation space with quick-change system
- Mechanical front PTO shaft
- Up to 5 proportional hydraulic outlets
- Simultaneous operation of two attachment functions
- 3 hydraulic drives



## COMFORTABLE CAB

**Optimum view of attachments and maximum comfort while working.**

- Cab with 3 seat variants: Single seat, two seats and movable seat
- Comfort cab with air conditioning and 360° panoramic view
- Side-opening windows
- Extremely spacious, even for taller, heavier drivers
- LED driving and work lights
- Heated front windscreen and exterior mirrors
- Air-suspension driver's seat with seat heating, height-adjustable and length-adjustable, with longitudinal-horizontal suspension



## EASY SERVICE ACCESS

**Daily service tasks can be carried out without removing the attachments.**

- Hydraulically tilting installation space can be tilted even when the attachment is mounted
- Tilting cab
- Pivoting and folding side panels on the right and left
- Battery accessible from the outside, e.g. for jump starting during winter
- Optional central lubrication system

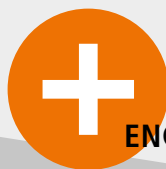




## MORE COMFORTABLE OPERATION

**Perfect conditions for efficient working.**

- Single-handed operation via joystick
- Custom-programmable joystick
- Central touch display for operating all hydraulic functions
- Adjustable armrest fitted to the seat



## ENGINE/DRIVE SYSTEM

**The most powerful articulated multi-functional tractor on the market.**

- Three engine variants: 101 / 115 / 129 HP
- Stage 5
- 100 % mechanical differential lock on both axes
- Transportation speed up to 40 km/h
- Permanent all-wheel drive
- Mechanical gear reduction
- Electronic load limit control
- Dual Drive

# CLEAN PERFORMANCE

Up to 130 HP and highly effective exhaust gas treatment make the S series the most powerful and future-proof articulated multi-functional tractor on the market.

## ENVIRONMENTALLY RESPONSIBLE POWER PACK

When decades of municipal expertise meet trendsetting technology, you know you're sitting in a Holder. The new S series is the best evidence of this:

Their power rating of 100–130 HP makes them the most powerful in their class – and with state-of-the-art exhaust gas treatment, they are also among the cleanest. The heart of the machine is a 3.6 l DEUTZ turbodiesel engine, which of course satisfies the latest Stage V exhaust emission standards. 99.9% of fine dust particles are collected by a maintenance-free, self-cleaning filter system (DOC & DPF). The remaining pollutants are then removed from the exhaust gas flow by an SCR system with Ad-Blue.

You can expect the exact amount of power you need; the engine of the S series provides its maximum torque of 410 Nm at 1600 rpm, which makes it possible to work at a lower engine speed. This reduces fuel consumption and, in conjunction with the integrated mass-balance transmission, guarantees low noise emissions. In combination with the mechanical PTO shaft, this creates the perfect conditions for tackling heavy-duty work on a long-term basis. What's more, the servicing and operating costs are kept low, thanks to long maintenance intervals (500 h), hydraulic lifters and the replacement of toothed belts with a spur gear.

**STAGE  
INSIDE V**

## STEPLESS ALL-WHEEL DRIVE UP TO 40 KM/H

- Carries out variable force distribution between the front and rear axle and ensures optimum power distribution across all four wheels
- In contrast to systems with wheel motors, the drive power is always applied to the axle with the greatest traction, which means that 100 % of the drive power is available at all times
- Your benefits: Maximum tractive power, even on difficult terrain, optimum traction, strong climbing power, optimum soil protection

## MECHANICAL DIFFERENTIAL LOCK

- Applies 100 % locking to both axles to prevent the wheels from spinning or becoming stuck on loose terrain
- Similar hydraulic systems only have an efficiency of 75 %
- Your benefits: Optimum traction, reduced risk of accidents, differential lock that can be activated via a toggle switch



## BENEFITS OF THE DRIVE SYSTEM AND ENGINE

- STEPLESS FROM 0–40 KM/H
- HIGH TRACTIVE FORCES
- EXTREME CLIMBING POWER
- SENSITIVE DRIVING
- MAXIMUM TRACTION
- REDUCTION IN FUEL CONSUMPTION DURING TRANSPORT
- LATEST EXHAUST EMISSION STANDARD
- STRONGEST IN ITS CLASS
- RELAXED WORKING

## LOAD-DEPENDENT DUAL DRIVE

- Combines a hydraulic and mechanical drive system within a single system
- Depending on the load, the vehicle switches automatically from hydraulic drive to mechanical drive while driving
- Benefits of the mechanical drive system: Significant reduction in noise and consumption, preservation of hydraulic components and therefore less wear
- Benefits of the hydraulic drive system: Sensitive, reactive steering, fast manoeuvring

## ELECTRONIC LOAD LIMIT CONTROL

- Regulates the travel speed while working depending on the power used by the attachment
- The vehicle always travels at the maximum possible working speed without the driver having to intervene
- Your benefits: Full concentration on the task at hand, relaxed and non-tiring work, no stalling of the engine

## MECHANICAL GEAR REDUCTION

- Doubles the tractive force and enables the vehicle to travel steadily at very low speeds
- Extreme gradients can be tackled effortlessly
- Your benefits: Slow and steady travel in conjunction with extreme thrust enables demanding work such as snow ploughing to be carried out with ease

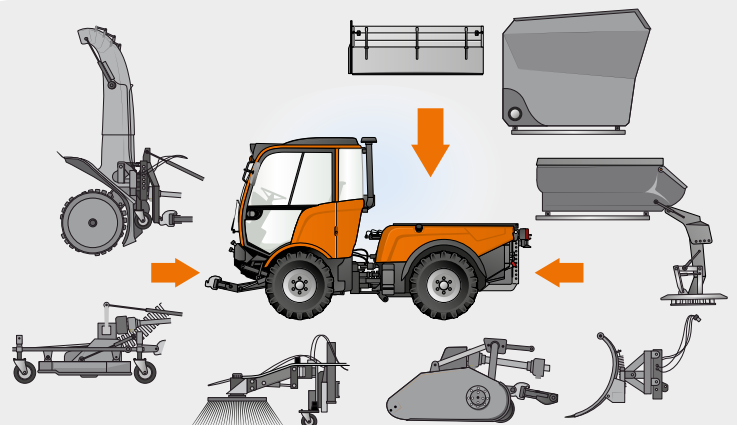
# REAL MULTIFUNCTIONALITY

Thanks to unique design features and technical solutions, the new S series can perform the most diverse range of tasks at the highest quality.

## DESIGNED FOR USE ALL YEAR ROUND

Like all Holder vehicles, the new Holder S series is multifunctional. With just a few steps the machine can be retrofitted with the appropriate attachments, for example for winter maintenance, sweeping or grounds maintenance. The vehicle is particularly suitable for applications that place huge demands on both human and machine.

The standardised front power lift (CAT II) has a lifting capacity of 2700 kg, enabling heavier attachments to be fitted. Thanks to the three-dimensional movement of the front power lift, the attachment can be adapted to the respective conditions and application. External control of the front lift enables attachments to be mounted and removed quickly and easily without having to rely on a second person. The front power lift can be raised and lowered from the outside. The front power lift is equipped with a vibration damping system in order to compensate for load peaks during transport; the hydraulics dampen vibrations between the vehicle and the attachments and thereby absorb shocks. This allows faster transport, improves driving safety, increases driving comfort and protects both the vehicle and attachment.





### 3 ATTACHMENT POINTS

Two standardised attachment points (front and rear lift) and a third attachment point for articulated attachments on the rear platform allow for a wide variety of attachment combinations. The large mounting frame in conjunction with an axle load of 3.2 t enables large, heavy attachments to be mounted with optimum weight distribution, as the load is positioned centrally above the rear axle. It is also possible to combine two operations, thereby increasing both productivity and power.

#### YOUR BENEFITS

- MOUNTING OF LARGE, HEAVY ATTACHMENTS
- MANOEUVRABILITY VIA ATTACHMENTS
- LOW CENTRE OF GRAVITY
- HIGH PRODUCTIVITY THANKS TO ATTACHMENT COMBINATIONS

### MECHANICAL PTO SHAFT

The mechanical PTO shaft enables attachments with high power requirements to be operated efficiently. The direct, low-loss mechanical drive from the engine gives this series a higher degree of efficiency than comparable hydraulic drives. Work can therefore be carried out for long periods, even in the case of high power consumption.

#### YOUR BENEFITS

- LOWER FUEL CONSUMPTION
- NO HEATING OR MIXING OF THE HYDRAULIC OIL
- INCREASED CONTINUOUS POWER
- LARGER ATTACHMENT DIMENSIONS

### HIGH-PERFORMANCE HYDRAULICS

With a flow of 0 – 120 l/min, 0 – 40 l/min and 0 – 25 l/min, there are up to three further drive options for attachments and attachment combinations in addition to the mechanical PTO shaft. A front sweeper can be operated in conjunction with a spreader, for example. With up to five proportional control units, complex attachments can be operated sensitively and precisely. Thanks to the simultaneous operation of two control units, two functions of the attachment can be controlled at the same time.



#### YOUR BENEFITS

- HIGH HYDRAULIC DRIVE POWER, 3 HYDRAULIC DRIVES
- SIMPLE OPERATION OF COMPLEX ATTACHMENTS
- SINGLE-HANDED OPERATION
- SIMULTANEOUS CONTROL
- PROPORTIONAL FUNCTIONS
- CUSTOM-PROGRAMMABLE JOYSTICK



# THE PERFECT COMMAND CENTRE

Equipped with countless smart ideas: The new S series enables you to work comfortably and tirelessly.



Custom-programmable joystick



Touch display for operating all hydraulic functions



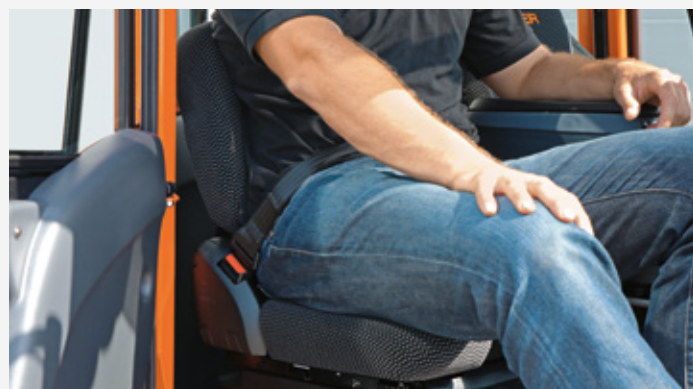
Adjustable armrest fitted to the seat

## MORE COMFORTABLE OPERATION

In the new S series, all of the operating elements required for the task at hand are within easy reach of the driver on the adjustable armrest fitted to the seat. This makes work simple, safe and non-tiring. All hydraulic functions can be operated with one hand using the joystick. This can be freely programmed via the central display, i.e. the hydraulic functions can be assigned to any of the operating elements on the joystick. This means that the vehicle can be adapted to the attachments used or the personal preferences of the driver. The integrated forward/reverse switch enables reversing to be activated quickly and easily without having to change grip. All settings for the respective applications can be adjusted via the large touch display, which also provides information about the vehicle. Up to two cameras can be connected to the display, which means that the driver has an optimum view of the area surrounding the vehicle at all times.

## ACCELERATOR PEDAL OR POTENTIOMETER

The right controls are available for every driver. In the S series, the driver can choose whether to control the speed comfortably via the potentiometer integrated in the joystick or via the foot pedal (SDS).



Fully equipped passenger seat approved for work incl. lap seat belt





## YOUR BENEFITS

- COMPENSATION OF VIBRATIONS AND NOISES VIA FOUR HYDRAULIC MOUNTS
- 2 WIDE-OPENING DOORS WITH EASY ACCESS INCL. FOOTSTEP AND HANDLE
- SLIDING WINDOW ON THE RIGHT AND LEFT
- SUNROOF
- INTEGRATED HEATER AND AIR CONDITIONING
- HEATED FRONT WINDSCREEN
- HEATED EXTERIOR MIRRORS
- DRIVING AND WORKING LIGHTS PLUS LED DAYTIME RUNNING LIGHT
- AIR-SUSPENSION SEAT WITH 3-POINT BELT, SEAT HEATING AND ARMREST



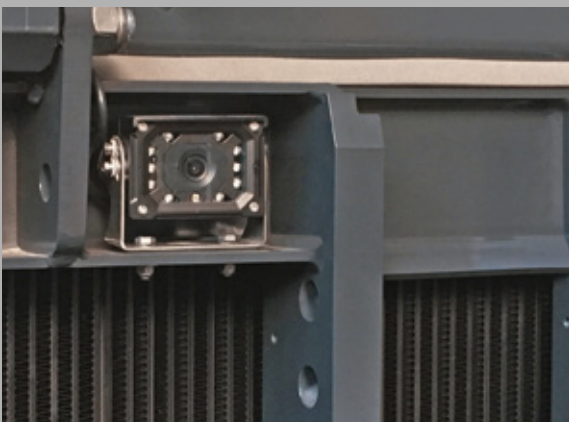
Air-suspension seat with seat heating and armrest

# SAFETY AS STANDARD

In a stressful working environment, one thing must remain paramount at all times:  
The safety of the driver.



The patented wheel load compensation makes sure all four wheels are in contact with the ground at all times



Increases safety while manoeuvring: Rear-view camera

## ON THE SAFE SIDE

With the S series, you are always on the safe side. Countless details integrated into the design ensure the highest level of safety, in particular the load-dependent hydraulic wheel load compensation. The patented Holder system for the active stabilisation of pendular movements stabilises the vehicle when travelling over obstacles or on uneven terrain. The vehicle thereby continuously adapts to the soil conditions while guaranteeing consistent driving stability.

## ADDITIONAL SAFETY FEATURES:

- BRAKE, APPLIED TO ALL 4 WHEELS
- ACOUSTIC REVERSE WARNING SYSTEM
- AUTOMATIC HANDBRAKE WHEN THE ENGINE IS SWITCHED OFF
- ROPS CAB
- SEAT CONTACT SWITCH
- AUTOMATIC BATTERY ISOLATING SWITCH
- REAR-VIEW CAMERA

## SPECIFICATIONS

|                                     | S 100   | S 115          | S 130          |
|-------------------------------------|---|----------------|----------------|
|                                     | 1 / 2-person cab  |                |                |
| <b>ENGINE</b>                       | Deutz TCD 3.6 4-cylinder common rail TURBODIESEL  |                |                |
| Power                               | 74.4 kW (101 HP)  | 85 kW (115 HP) | 95 kW (129 HP) |
| Max. torque at 1600 rpm             | 410 Nm  |                |                |
| Displacement                        | 3621 cm <sup>3</sup>  |                |                |
| Emission standard                   | Stage 5   |                |                |
| Fuel tank                           | 82 l  |                |                |
| <b>DRIVE</b>                        | Stepless DUAL DRIVE drive system (combination of hydrostatic and mechanical drive) with permanent all-wheel drive and electronic load limit control   |                |                |
| Speed                               | 0 – 40 km/h   |                |                |
| Differential lock                   | Front and rear, mechanical with 100% locking  |                |                |
| Service brake                       | Hydraulically actuated wet disc brake, applied to all four wheels   |                |                |
| Parking brake                       | Electric parking brake, applied to both axles   |                |                |
| <b>FRONT PTO SHAFT</b>              |   |                |                |
| Revs                                | Can be switched to 540/750 rpm or 1000/750 rpm  |                |                |
| <b>HYDRAULICS</b>                   |   |                |                |
| Gear pump volume flow               | 36.5 l/min at 180 bar, of which 0 – 25 l/min for attachments, can be controlled from the cab, supply and return at the front  |                |                |
| Tandem pump volume flow             | 43.5 l/min at 180 bar, of which 0 – 40 l/min for attachments, can be controlled from the cab, supply and return at the front and rear   |                |                |
| Servopump volume flow               | 0 – 120 l/min at 280 bar, can be controlled from the cab, of which 0 – 120 l/min for attachments, can be controlled from the cab, supply and return at the front and rear                                 |                |                |
| Hydraulic control units             | Up to 5 double-acting electro-hydraulic control units with floating position, can be operated proportionally, 2 control units can be operated simultaneously, all control units with adjustable flow rate |                |                |
| Hydraulic couplings                 | Up to 4 pairs of couplings at the front/up to 3 pairs of couplings at the rear  |                |                |
| Hydraulic oil tank                  | 34 l  |                |                |
| Front power lift                    | CAT II, double-acting, with floating position and vibration damping system, optional electro-hydraulic device relief, hydraulic side and inclination adjustment   |                |                |
| Lifting force                       | 2700 kg   |                |                |
| Rear power lift                     | CAT II, double-acting   |                |                |
| <b>ELECTRICS</b>                    |   |                |                |
| Dynamo                              | 14 V / 95 A   |                |                |
| Battery                             | 12 V / 110 Ah   |                |                |
| Electrical sockets                  | 13-pole socket at the front and rear, 21-pole transfer socket for attachments on the rear wall of the cab   |                |                |
| <b>WEIGHT</b>                       | Includes driver of 75 kg; depends on tyres and equipment  |                |                |
| Empty weight                        | 3100 – 3450 kg  |                |                |
| Permissible total weight            | 5500 kg / optional: 6000 kg   |                |                |
| Permissible axle load               | Front: 3200 kg / rear: 3200 kg  |                |                |
| Towing capacity                     | Unbraked: 2500 kg / overrun braked: 4500 kg   |                |                |
| <b>DIMENSIONS</b>                   | Depends on tyres  |                |                |
| Wheelbase                           | 1827 mm   |                |                |
| Total length incl. front power lift | 3920 mm   |                |                |
| Total height                        | 2233 – 2295 mm  |                |                |
| Total outer width                   | 1360 – 1580 mm  |                |                |
| Turning circle radius inside        | 1974 mm   |                |                |
| Turning circle radius outside       | 3045 mm   |                |                |



03/2019 Language: English ID no.: 166909-01 Subject to technical changes Proper use of the attachments in accordance with Holder's attachment evaluation

# MULTIFUNCTIONALITY AT ITS FINEST

Whether on roads, lanes or grassland, in pedestrianised zones, stadiums or parks, Holder multifunctional tool carriers can master the most diverse range of applications at the highest level.

Optimum guidance, sales and service from your Holder partner:

**HOLDER**  
NO COMPROMISE

**Max Holder GmbH**  
Mahdenstraße 8 | 72768 Reutlingen | Germany  
Phone: +49 7121 930729-0 | Fax: +49 7121 930729-213  
info@max-holder.com | [www.max-holder.com](http://www.max-holder.com)